




Review

# Microglia Contribution to the Regulation of the Retinal and Choroidal Vasculature in Age-Related Macular Degeneration

C. Henrique Alves <sup>1,2,3,4</sup> , Rosa Fernandes <sup>1,2,3,4</sup>, Ana Raquel Santiago <sup>1,2,3,4</sup>   
and António Francisco Ambrósio <sup>1,2,3,4,\*</sup> 

<sup>1</sup> Retinal Dysfunction and Neuroinflammation Lab, Coimbra Institute for Clinical and Biomedical Research (iCBR), Faculty of Medicine, University of Coimbra, 3000-548 Coimbra, Portugal; chalves@fmed.uc.pt (C.H.A.); rfernandes@fmed.uc.pt (R.F.); asantiago@fmed.uc.pt (A.R.S.)

<sup>2</sup> Center for Innovative Biomedicine and Biotechnology (CIBB), University of Coimbra, 3004-531 Coimbra, Portugal

<sup>3</sup> Association for Innovation and Biomedical Research on Light and Image (AIBILI), 3000-548 Coimbra, Portugal

<sup>4</sup> Clinical Academic Center of Coimbra (CACC), 3004-561 Coimbra, Portugal

\* Correspondence: afambrosio@fmed.uc.pt; Tel.: +351-239-480093

Received: 23 April 2020; Accepted: 12 May 2020; Published: 14 May 2020



**Abstract:** The retina is a highly metabolically active tissue with high-level consumption of nutrients and oxygen. This high metabolic demand requires a properly developed and maintained vascular system. The retina is nourished by two systems: the central retinal artery that supplies the inner retina and the choriocapillaris that supplies the outer retina and retinal pigment epithelium (RPE). Pathological neovascularization, characterized by endothelial cell proliferation and new vessel formation, is a common hallmark in several retinal degenerative diseases, including age-related macular degeneration (AMD). A limited number of studies have suggested that microglia, the resident immune cells of the retina, have an important role not only in the pathology but also in the formation and physiology of the retinal vascular system. Here, we review the current knowledge on microglial interaction with the retinal vascular system under physiological and pathological conditions. To do so, we first highlight the role of microglial cells in the formation and maintenance of the retinal vasculature system. Thereafter, we discuss the molecular signaling mechanisms through which microglial cells contribute to the alterations in retinal and choroidal vasculatures and to the neovascularization in AMD.

**Keywords:** age-related macular degeneration (AMD); retina; choroid; microglia; retinal vasculature; inflammation; neogenesis; angiogenesis

## 1. Introduction

The retina is the nervous tissue that sits at the back of the eye and is responsible for converting light into electrical signals and sending these on to the brain for visual recognition. Retinal development is a long and complex process that, in humans, begins during the fourth week of embryogenesis and continues into the first year of life [1]. During retinogenesis, retinal progenitor cells give rise to six major types of neurons, ganglion cells, amacrine cells, horizontal cells, bipolar cells, cone and rod photoreceptor cells and one glial cell type, the Müller glial cells [2]. The six different cell lines are organized into a laminated structure composed of three nuclear layers, the outer nuclear layer comprising the cell soma of the photoreceptors; the inner nuclear layer composed by the nuclei of the horizontal, bipolar and amacrine cells and of the Müller glial cells; and the ganglion cell layer (GCL)

consisting of the soma of ganglion and amacrine cells. The three nuclear layers are divided by two plexiform layers composed by the axonal, dendritic processes and synapses of these cells [3].

Microglia, the resident immune cells of the retina, are not derived from retinal progenitors cells but are derived from primitive yolk sac progenitors [4], and therefore are from mesodermal/mesenchymal origin. The precursors of microglia are found in the retina, before vascularization, via the vitreal surface of the retina or by migrating from non-neural ciliary regions in the periphery [5,6]. In the adult retina, microglial cells are distributed in the plexiform layers, ganglion cell layer and nerve fiber layer, where they survey the surrounding environment with their motile processes [7,8].

With approximately 4.5 million cone and 90 million rod photoreceptors, the human retina is the most metabolically expensive tissue in the human body. The retina is fed nutrients and oxygen from a unique dual blood supply that divides the retina into outer and inner layers [9]. The formation of the retinal vasculature is a timely controlled process driven by numerous signaling pathways and cellular interactions. Pathological blood vessels in the eye constitute a threat to normal vision. Angiogenesis, important in both physiological vascular development and pathological neovascularization, occurs as endothelial cells proliferate and form new vessels following guidance cues and angiogenic stimulators and inhibitors [10]. Dysregulated angiogenesis disrupts delivery of oxygen and nutrients, resulting in unbalanced metabolic demand and supply and disturbed neural retinal function. Abnormal ocular angiogenesis is associated with a broad spectrum of eye diseases, including neovascular age-related macular degeneration (AMD) [11,12], diabetic retinopathy [12,13], retinopathy of prematurity [14], retinitis pigmentosa [15], amongst others. Pathological retinal neovascularization is characterized by leaky and tuft-like vessels, which are associated with retinal exudates and hemorrhages, that might lead to retinal detachment, retinal damage or both [16].

The retina has the particularity of being the only tissue in the human body for which deep vasculature can be visualized directly and in a non-invasive way using, for example, optical coherence tomography angiography (OCTA), presenting a unique opportunity to study vascular alterations in eye diseases [17,18].

Several studies demonstrated the importance of microglial cells in retinal development and degeneration. However, recently, some studies suggested that microglia also play an important role in the development of retinal vasculature [8,19–22]. Here, we will focus on the molecular and cellular mechanisms ruled by microglia and their contribution to the formation and maintenance of the retinal vasculature under physiological and disease conditions.

## 2. Development and Structure of Retinal and Choroidal Vasculature

The development of the vasculatures of the embryonic and fetal human eye is an orchestrated and synchronous process that is dependent on the demand for oxygen. The choroidal vasculature is the first to develop followed by the hyaloid vasculature and then the retinal vasculature [23].

The choroid is a thin, highly vascularized and pigmented tissue positioned under the neural retina that constitutes the posterior part of the uveal tract (the iris, ciliary body and choroid). The inner limit of the choroid is the Bruch's membrane on which the retinal pigment epithelium (RPE) lies [2]. The vascular layer of the choroid is divided into three layers from internal to external, with increasing luminal diameter: the anterior choriocapillaris with broad and flat lumens arranged in a honeycomb-like lobular pattern especially in the posterior pole, Sattler's layer of intermediate vessels in the middle and the outermost Haller's layer with large vessels [24].

The main function of the choroid is to nourish the outer retina, RPE, the foveal avascular zone and the optic nerve [25], maintaining the metabolic demands of the RPE and photoreceptor cells. Being the largest source of blood supply to the posterior segment of the eye, the choroidal vasculature is also responsible for the transport of metabolic waste from the RPE, contributing to the normal retinal function. The choroid also acts as a thermal regulator for the outer retina via heat dissipation [26,27]. The choroidal circulation supplies the inner retina, in species where the retinal vessels are absent (guinea pig) or sparse (rabbit) [27]. In primate eyes, the short posterior ciliary arteries and branches

of the ophthalmic artery form a circle around the optic nerve as they pass almost perpendicularly through the sclera to supply the choroid [28]. The short posterior ciliary arteries supply the posterior choroid and the long posterior ciliary arteries supply the anterior portion of the choroid.

The development of human choriocapillaris is unusual when compared with other capillary beds in the body [29]. Choriocapillaris develops before the formation of intermediate or large vessels, via hemovascuogenesis in which blood vessel and blood cells differentiate from a common precursor, the hemangioblast [24]. In humans, the choriocapillaris starts to differentiate simultaneously with the development of the RPE during the fourth and fifth week of gestation. At this stage of development, cells expressing CD31, CD34, CD39 and vascular endothelial growth factor receptor 2 (VEGFR-2) are detected where choriocapillaris will form [23]. Later, at around 11 and 12 weeks of gestation, the development of intermediate choroidal vessels in Sattler's layer occurs by angiogenesis, facilitating the connection of choriocapillaris with the larger vessels of the Haller's layer [24]. The choriocapillaris is fully mature, with flat, thin-walled fenestrated vessels at 22 weeks of gestation [30].

Alterations in choroidal structure or impaired blood flow result in degenerative changes and neovascularization, such as choroidal coloboma and AMD [31,32]. The thickness of the choroid can be used to assess abnormalities in choroidal vasculature, and it has been proposed as a biomarker for cardiovascular diseases [26]. There is an increasing interest in the development of quantitative methods to assess choroidal structural characteristics and their associations with ocular diseases (see Section 4).

Retinal blood vessels are organized in two planar layers that are restricted to the inner layers of the retina. The central retinal artery enters the eye through the centre of the optic nerve. The artery then branches in the inner retina to form three capillary layers. The retinal vessels provide blood to the inner two-thirds of the retina [33]. The retinal vessels develop into intraretinal capillaries that ramify at the inner and outer plexiform layers [34]. In mammals, retinal vessels, as opposed to the choriocapillaris, are not fenestrated and nourish the retina mainly by transcytosis of nutrients, since the presence of tight junctions between the endothelial cells restrict paracellular diffusion. Retinal pericytes directly contact the vascular endothelium. Pericytes are enclosed by the basement membrane and abundantly express smooth muscle actin that confers contractile properties [35].

Early in eye development, the oxygenation of the retinal tissue is provided by the vascular networks of the choroid and hyaloid. Hyaloid vessels progressively regress by apoptosis while the development of the retinal vasculature occurs on an astrocyte scaffold [36]. Failure of this regression is associated with incomplete retinal vascularization [37], suggesting an interplay of these two mechanisms. In humans, the formation and regression of the hyaloid vasculature and most of the retinal vasculature development occur in utero. In mice, retinal vasculature development is similar to humans but begins postnatally [38]. The most superficial retinal vascular layer is the first to be formed, starting from the optic nerve head and progressing toward the peripheral edge of the retina. When this superficial layer is almost formed, retinal vessels grow into the retina to form the deep retinal vascular layer at the base of the outer plexiform layer. Then, the intermediate layer forms between the superficial and deep layers, superficial to the inner plexiform layer, building a well-organized network to complete the three vascular layers [30]. Each of these three layers has a characteristic location and branching pattern and is considered an independent neurovascular unit.

Angiogenesis is the process by which proliferating endothelial cells form new vessel sprouts and extend the vascular network from pre-existing vessels. Vasculogenesis is defined as the de novo formation of blood vessels from isolated vascular endothelial precursor cells that coalesce into cords and then form a lumen. Historically, there has been controversy regarding the development of retinal vessels. Some authors support that retinal vasculature is formed by angiogenesis [34,36,39,40] while others consider that vasculogenesis is the process underlying the formation of retinal vasculature [41–43]. Moreover, some authors are proposing that retinal vasculature develops in two steps: the initial formation of the primary internal vascular network by vasculogenesis, followed by an angiogenic phase that founds the deep secondary network.

Non-endothelial cells, such as astrocytes and retinal ganglion cells, provide key molecular and structural cues for the developing retinal vasculature. Astrocytes, retinal ganglion cells and cells in the inner nuclear layer express vascular endothelial growth factor (VEGF) [44]. In particular, VEGF-A is secreted by astrocytes and retinal ganglion cells to promote new vessel formation and to alleviate tissue hypoxia [45]. Apparently, VEGF-A originated from astrocytes are not required for angiogenesis [45]. Nevertheless, astrocytes provide structural “paths” for endothelial cells to use as a template as the vascular network expands [46]. Recently, the VEGF receptor Flt-1 was demonstrated to regulate the extent of vascular growth and to promote the efficiency of endothelial tip cells and their filopodia in establishing new vessels in spatially defined locations along the astrocyte “template” [47]. VEGF isoforms have been shown to perform specific functions during the development of the vasculature [48,49]. For example, the VEGF<sub>164</sub> isoform (in the mouse; VEGF<sub>165</sub> in humans) leads to leukocyte adhesion in pathological, but not the physiological, neovascularization [50]. The complete inhibition of intracellular VEGF signaling results in substantial suppression of normal vascular development [50,51], suggesting that VEGF isoforms differently to VEGF<sub>164</sub>, and in combination, may be sufficient to promote normal physiological neovascularization. Despite the high expression of VEGF by retinal ganglion cells in the developing macula [52], the migration of endothelial cells and astrocytes in the developing macula is inhibited and the fovea never develops a retinal vasculature [53]. This feature is probably due to the expression of high levels of anti-angiogenic factors, such as the pigment epithelium-derived factor (PEDF) [54]. Axon guidance factors of the ephrin, semaphorin, slit and netrin families may also have a role in regulating vascular growth in the macula through repellent mechanisms [55].

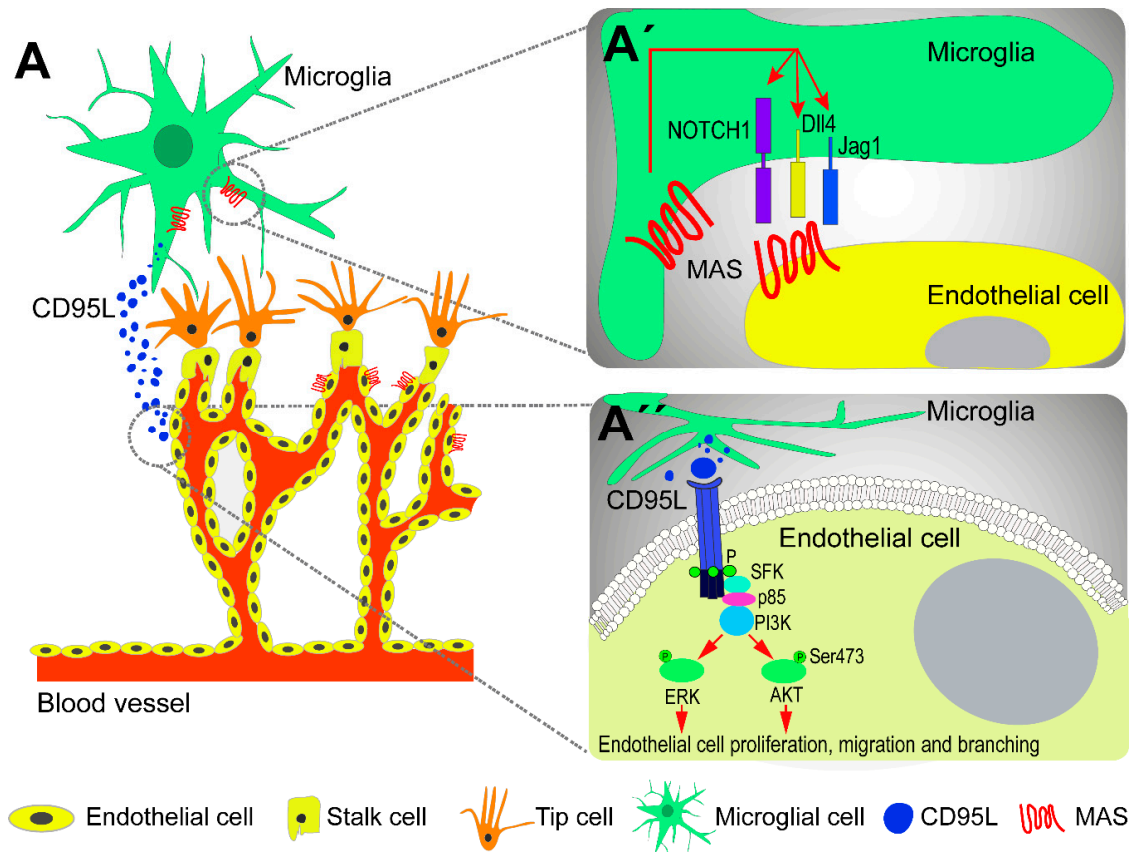
### 3. The Role of Microglia in Retinal Vascular Development

In the retina, vascular patterning is essentially dependent on astrocytes in physiological conditions [56]. Astrocytes secrete VEGF in response to hypoxia, guiding the endothelial cells. Other cells also participate in the development of retinal vasculature. For example, modulating the HIF/VEGF system in horizontal or amacrine cells changes the density of the adjacent capillary plexus [57], demonstrating that these cells are also required for generating and maintaining the intraretinal vasculature.

Microglia are the resident innate immune cells of the central nervous system with crucial functions during development, and in normal and pathological conditions [58]. In the adult healthy, microglia keep a fairly low turnover rate without contributions from cells of the periphery, such as circulating monocytes or blood-derived macrophages [59]. These cells have important roles in health and disease and in development, including the modulation of retinal angiogenesis [60]. Although microglia and the vascular cells do not appear in the developing retina at the same time, the association of microglia with the developing retinal vasculature has been described for many years [61]. This association is supported by experimental data showing that pharmacological depletion of resident microglia from the developing retina, decreases retinal vascular area and density, as the effect that is amended by the reintroduction of microglial cells in the vitreous [60].

Microglia, present at sites of endothelial tip cell anastomosis, stimulate vessel sprouting. However, physical contact between microglial and endothelial cells is not essential for the angiogenic stimulatory effects of microglia, suggesting that the effects of microglial cells on retinal vasculature are mediated via soluble factors secreted by these cells. Indeed, microglia secrete soluble factors that shape vascular growth and branching [62], such as CD95L that activates CD95 on vessels, mediating vascular growth through Src-family kinase and PI3K signaling [63] (Figure 1). Additionally, basigin-2, an extracellular matrix metalloproteinase inducer, was reported to facilitate microglia-endothelial communication through the secretion of insulin-like growth factor-1 (IGF-1) via the PI3K/AKT signaling pathway [64]. Recently, MAS, the receptor of angiotensin-(1-7), was shown to play an important role in microglia recruitment and vascular growth in the developing retina [65]. The activation of MAS causes the upregulation of Notch1, Delta-like ligand 4 and Jagged1 expression, members of the Notch signaling

pathway (Figure 1). Indeed, this signaling pathway has been implicated in microglia localization and interaction with endothelial cells during sprouting angiogenesis and on the regulation of the fate of tip cells [66,67].



**Figure 1.** Contribution of microglial cells to vascular development in the retina. (A) The activation of the MAS receptor is involved in the recruitment of microglia and vascular growth in the developing retina by activating the Notch signaling pathway. (A') Microglial cells secrete CD95L that binds to its receptor CD95 on endothelial cells. The phosphorylation of the death domain by Src-family kinase results in the activation of PI3K signaling pathways, leading to the activation of AKT or ERK (A'').

Interestingly, systemic inflammation in the neonatal period is known to impair vessel development by decreasing vessel extension, reducing capillary density and inducing localized overgrowth of abnormal retinal vessels [68]. In addition to the astrocytes that are localized in the lesion of abnormal vessels, activated inflammatory cells might cross the blood-retinal barrier and affect the normal vascular growth in the developing retina [68]. The infiltration of immune cells may be responsible for the increase in inflammation-related cytokines, such as tumor necrosis factor (TNF), interleukin (IL)-1 $\beta$  and IL-12a. TSP-1 is an anti-angiogenic and pro-apoptotic factor of retinal angiogenesis during development that antagonizes VEGF-mediated signaling [69]. TSP-1 was reported to be increased in systemic inflammation-induced retinopathy [68]. Moreover, microglia are also implicated in abnormal retinal vascular development during early postnatal inflammatory stress. These cells become reactive and are found either around branch points of sprouting vessels or at tip cells [70]. These alterations impact retinal neuronal function later in life, probably due to exacerbated microglial activity as reflected by the increase in *IL-1 $\beta$* , *IL-6* and *TNF*, implicating microglia as the cellular player by which perinatal inflammation causes visual deficits [70].



#### 4. Changes in Retinal and Choroidal Vascular Structure and Function in Age-Related Macular Degeneration (AMD)

Age-related macular degeneration is a leading cause of vision loss among the elderly population in developed countries [71]. The global prevalence of AMD is expected to increase from 196 million people in 2020 to 288 million in 2040, as a consequence of exponential ageing [72]. This disease affects the central region (macula) of the retina, as a result of photoreceptor/RPE/Bruch's membrane/choriocapillaris complex abnormalities. When the central area of the macula, named the foveal avascular zone (the area containing the highest density of cones) is affected, the central field of vision of patients becomes compromised [73,74]. Age-related macular degeneration is a degenerative disease that progresses from early and intermediate AMD, which are mainly characterized by the accumulation of yellowish deposits called drusen located beneath the RPE and abnormalities of the RPE, respectively, to late-stage AMD defined by severe retinal and choroidal damage [75,76].

Age-related macular degeneration is a leading cause of vision loss among the elderly population in developed countries [71]. The global prevalence of AMD is expected to increase from 196 million people in 2020 to 288 million in 2040, as a consequence of exponential ageing [72]. This disease affects the central region (macula) of the retina, as a result of photoreceptor/RPE/Bruch's membrane/choriocapillaris complex abnormalities. When the central area of the macula, named the foveal avascular zone (the area containing the highest density of cones) is affected, the central field of vision of patients becomes compromised [73,74]. Age-related macular degeneration is a degenerative disease that progresses from early and intermediate AMD, which are mainly characterized by the accumulation of yellowish deposits called drusen located beneath the RPE and abnormalities of the RPE, respectively, to late-stage AMD defined by severe retinal and choroidal damage [75,76].

Although drusen biogenesis is not fully understood, some authors have suggested that drusen result from the RPE or choriocapillaris damage. The specific mechanisms that connect RPE and choroidal endothelial cells pathology and drusen formation may include oxidative injury from light exposure or systemic factors, like compounds associated with smoking, lipofuscin accumulation, complement activation, Bruch's membrane-induced dysfunction and ischemia [32,77–84]. Drusen are made up of a complex mixture of inflammatory mediators and lipids of retinal and choroidal origin [77,85–89] and their number and size may be indicative of risk for some future vision loss. Small drusen with well-demarcated borders (hard drusen) are usually neither age-related nor associated with an increased risk for the development of neovascularization [90,91], while larger drusen (measuring 63  $\mu\text{m}$  or greater) lacking distinct borders (soft drusen) predict progression to its advanced forms of the disease [92].

Besides subretinal drusenoid deposits found in AMD, several histopathological studies reported the presence of yellowish lesions in the fundus, which can be viewed using blue light. Although these reticular pseudodrusen have some similarities in their composition compared to the subretinal deposits, such as the presence of vitronectin, complement proteins, apolipoprotein E and unesterified cholesterol, they lack immunoreactivity for protein markers of RPE, Müller glial and photoreceptor cells [93,94]. Interestingly, the presence of reticular pseudodrusen has been associated with late manifestations of AMD, including both geographic atrophy (nearly 20% of patients) and choroidal neovascularization (about 43% of patients) [95,96]. The geographic (dry) form of AMD is hallmarked by the presence of drusen and atrophy of the RPE. The exudative (wet) form is characterized by the growth of abnormal and fragile vessels from the choroid (known as choroidal neovascularization) under and into the macular portion of the retina. The leakage of blood and fluid from these newly formed vessels (choroidal neovascular membranes) contribute to the damage of the macula and cause central vision to become blurred and distorted. Although exudative (wet) AMD is less common (10 to 15% of affected individuals) than the dry form of the disease, it is associated with a faster sight decline compared to dry AMD, in which the rate of vision loss is usually very gradual.

With the help of OCTA, that allows the study of retinal and choroidal microvasculature and en face visualization of the blood flow at different anatomic retinal layers, without the need for the dye

injection [97], it is becoming increasingly clear that AMD pathogenesis may extend beyond the outer retina. In fact, although intermediate AMD is hallmarked by the presence of at least one large druse ( $>125\ \mu\text{m}$ ) and abnormalities in RPE or both, it has been reported that the inner retinal vasculature is also affected in intermediate AMD [98]. Eyes of AMD patients present reduced vascular density in the superficial capillary plexus and decreased total vessel length and average vessel diameter in the deep capillary plexus, suggesting an association between density changes and decreased vessel number and caliber [98,99]. The complexity of the vasculature is also reduced in both capillary layers, which suggests loss or reduced flow of vessels at the intermediated AMD stage [99]. Besides alterations in retinal vessels, several other structural changes seem to be present in the inner retina in the early stages of AMD, such as loss of GCL, and inner plexiform layer and ganglion cell complex thickness [100–107]. In fact, a decrease in GCL thickness, in intermediate AMD, seems to be associated with changes in the vasculature supplying the inner retina [99], resulting in ischemia and cell loss. Ganglion cell complex thinning and photoreceptor cell damage (measured by the reflectivity of the en face inner segment/outer segment junction disruption) were found in studies investigating the relationship between ganglion cell complex thickness and photoreceptor alterations in eyes of patients with intermediate AMD [101]. Moreover, decreased thickness of inner retinal layers and peripapillary retinal nerve fiber layer correlates with AMD [100]. Although these reports suggest correlations between outer and inner retinal changes, it is difficult to ascertain the exact relationship between structural and vascular components of the inner retina in AMD.

With distinct approaches, several studies demonstrated the association between choroidal vascular changes with ageing and early AMD. Fluorescein angiography showed a prolonged choroidal filling phase in patients with early AMD [108], which is in agreement with the observations of reduced choroidal perfusion caused by a change in diffusional characteristics of the Bruch's membrane [109,110]. Choroidal thickness is negatively correlated with age [111], and fluorescein angiograms show reduced blood volume and abnormal blood flow in eyes with nonexudative AMD [90,112]. A combination of choriocapillaris luminal narrowing, loss of cellularity and thinning of the choroid has been proposed as a potential cause of reduced blood flow [113]. Moreover, choriocapillaris dropout has been well documented in AMD patients and is usually associated with morphological features of eyes with AMD, including the accumulation of drusen, presence of reticular pseudodrusen and RPE atrophy [32,114–116].

In the case of neovascular AMD, the disease is hallmarked by choroidal neovascularization and associated manifestations such as pigment epithelial detachment, retinal pigment epithelial tears, disciform scarring and intraretinal hemorrhages [117]. The choroidal neovessels breach the Bruch's membrane and invade sub-RPE and subretinal spaces. Clinical assessment of neovascular AMD is based on visual acuity testing, Amsler grid testing and slit-lamp examination, and in certain cases, to ascertain whether the disease is active, spectral-domain (SD)-OCT and fundus fluorescein angiography (FFA) are used. In fact, with fundus fluorescein angiography (FFA), the gold standard for the diagnosis of neovascular AMD, in combination with SD-OCT, that aids in both the diagnosis and follow-up of the disease, choroidal neovascularization (CNV) can be classified into three types: type 1 CNV, which involves the sub-RPE space and refers to vessels beneath the RPE (corresponds to angiographically occult CNV); type 2 CNV, which also involves the sub-RPE space and refers to neovessels growing from the choroid to the subretinal space between the neurosensory retina and the RPE (corresponds to angiographically classic CNV); and, type 3 CNV, which appears as intraretinal anastomosis originating in the deep capillary plexus of the retina [117].

## 5. The Contribution of Microglia to Retinal and Choroidal Neovascularization in AMD

In normal retinas, the continuous surveillance for the detection of noxious stimuli is performed by microglia, which are mostly confined to the plexiform layers where they exhibit complex ramified processes sensing the local retinal microenvironment [118,119]. These cells play an important role in retinal homeostasis, contributing to neuroprotection against transient pathophysiological assaults.

Microglia express a variety of markers, such as CD45, MHC-I, MHC-II and macrophage antigens, including Iba-1, which suggests that microglia are a heterogeneous population of cells [118,120]. Inflammatory responses during retinal pathophysiology are coordinated by microglial cells [121].

Several mechanisms are known to be involved in endothelial dysfunction in the retina and choroidal neovascularization in AMD, such as oxidative stress and chronic inflammation [122]. Nitric oxide is produced by three nitric oxide synthase isoforms (endothelial, neuronal and inducible) that are expressed to variable degrees in the retina [123]. In the retina, nitric oxide is required for normal visual function. Although nitric oxide is itself a radical, its reactivity is low compared to the oxidative products, for example, dinitrogen trioxide ( $N_2O_3$ ) and peroxynitrite ( $ONOO^-$ ), can be generated in the presence of concomitant oxidative stress [124]. This can lead to nitrosative stress following the reaction of these reactive products with molecules, such as proteins, lipids and DNA [125,126]. Oxidative and nitrosative stress, as a result of an imbalance between the production of reactive oxygen and nitrogen species, and antioxidant defense system plays a key role in the onset and progression of AMD [127–131].

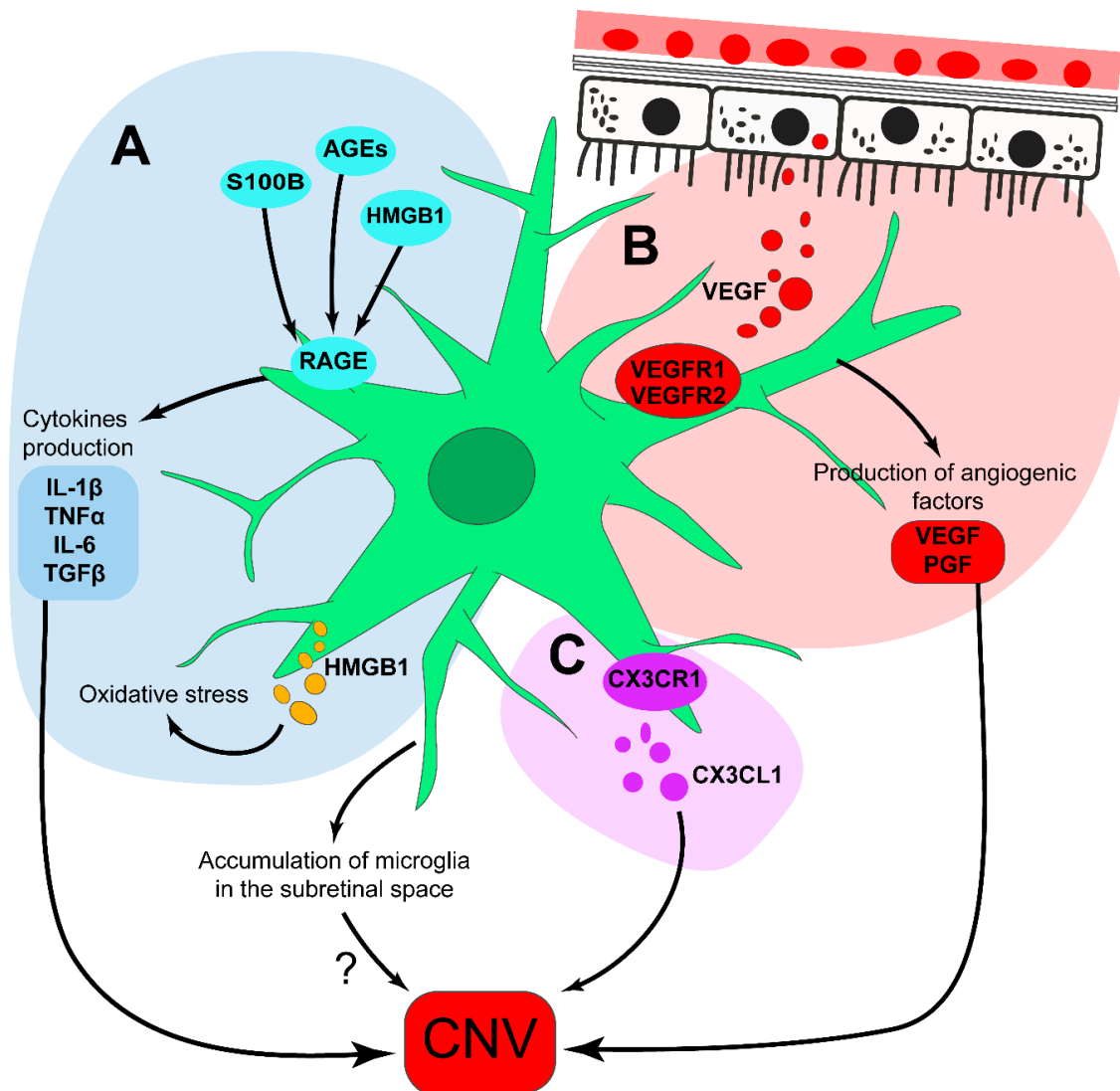
The retina is particularly prone to oxidative stress since it is the most oxygen-consuming tissue in the body [132] and most of the oxygen consumption occurs in photoreceptor and RPE cells. RPE cells are responsible for phagocytosing and shedding photoreceptor outer segments. With age, the phagocytic capacity of RPE cells, that is essential for the renewal of photoreceptors (rods and cones), is compromised, and incompletely degraded material is deposited in the form of lipofuscin in Bruch's membrane, contributing to drusen formation and Bruch's membrane thickening [133–137]. Impaired clearance mechanisms of RPE, as a result of the excessive amount of reactive oxygen species and oxidative damage to DNA, proteins and lipids, can contribute to increased lipofuscin (the main constituent of drusen made of free-radical-damaged protein and fat) accumulation.

In an environment of oxidant stress, as it occurs in aged RPE, production and accumulation of advanced glycation end product (AGEs) are enhanced, as well as, activation of AGEs receptors (RAGE) [138], which are found in endothelial cells, pericytes, microglia, monocytes and macrophages, among other cells [138]. Experimental studies have shown that exposure of RPE cells to RAGE ligands, AGEs or S100B, can lead to retinal tissue damage, through RPE-mediated VEGF expression, leading to pathologic angiogenesis [139,140]. Although the receptor for AGEs is not usually expressed in high levels in the retina, it was found to be highly accumulated in RPE cells, photoreceptors and choriocapillaris in advanced AMD [141,142]. RAGE is recognized as a pattern-recognition receptor, and in addition to binding AGEs, can bind other proteins, such as high mobility group protein B1 (HMGB1), which can be released by necrotic cells passively, and by active secretion from macrophages, natural killer cells, and dendritic cells. Interaction between RAGE and its ligands results in a wide range of effects on several cellular pathways that are important in oxidative stress and inflammation [143–147]. RAGE activation, as a result of its interaction with S100B, was shown to contribute to CNV through regulating angiogenic activity, immune cells (microglia/macrophages) activation and infiltration to the damaged site, and upregulation of pro-inflammatory cytokines [148] (Figure 2).

It is known that drusen components, such as  $A\beta$  peptide 1–40 may be responsible for the increased expression of inflammatory molecules and inflammasome components in the retina and RPE in AMD. Furthermore, several cytokines (including TNF and IL-1 $\beta$ , IL-6 and transforming growth factor-beta (TGF- $\beta$ )) have an important role in CNV [149]. A recent report has shown that pro-angiogenic cytokines and growth factors like VEGF and placental growth factor (PGF), which are produced by microglia (and macrophages), are present in high levels in ocular fluids of AMD patients [150]. Blockage of these molecules using antibodies reduces neovascularization and leakage, in a laser-induced CNV mouse model [150]. Furthermore, IL-1 $\beta$  levels are strongly reduced after PGF and VEGF-A co-inhibition. Abolishment of IL-1 $\beta$  signaling through Il1r1 deficiency leads to a reduction in the number of CNV lesions both in a rat model of laser-induced CNV [151] and in a mouse model of AMD [152]. Altogether, these data suggest that modulation of the pro-inflammatory state governed by microglia by decreasing the expression of PGF can have an impact on choroidal neovessels formation. Moreover, increased



levels of IL-6 have been found in a laser-induced CNV mouse model [153]. IL-6 receptor blockade significantly reduced the expression of MCP-1/CCL2, VEGF and inhibited macrophage infiltration into CNV areas [153]. TGF- $\beta$  is mainly produced by RPE cells and pericytes [154] and has been implicated in the regulation of endothelial cell proliferation (activated angiogenesis), in macrophage infiltration, as well as in extracellular matrix (ECM) proteolytic remodeling (vascular remodeling) [155]. Increased levels of TGF- $\beta$  are associated with retinal angiogenesis, through regulation of pro-angiogenic factors [156,157]. TGF $\beta$ R2-deficient retinal microglia induce abnormal responses to laser-induced injury enhancing CNV, pointing out that the absence of TGF- $\beta$  signaling in retinal microglia can contribute to neurodegeneration and neovascularization [22].



**Figure 2.** The role of microglial cells in choroidal neovascularization (CNV). Microglial AGE receptor (RAGE) activation by RAGE ligands (AGEs, S100B and HMGB1) leads to the release of inflammatory cytokines (IL-1 $\beta$ , TNF $\alpha$ , IL-6 and TGF $\beta$ ) and production of ROS, ultimately leading to CNV (A); VEGF secreted by RPE can activate microglial VEGFR1 and VEGFR2, which may play a role in the early and late stages of CNV (B). Moreover, proangiogenic cytokines and growth factors like VEGF and PGF produced by microglia contribute to CNV (B); interaction of CX3CR1 with its ligand CX3CL1 may play a role in regulating microglia accumulation in the subretinal space, retinal degeneration and ultimately to CNV (C).

There is substantial evidence suggesting that changes in microglial cells are not merely associated with secondary phenomena in AMD. Besides the contribution of RPE dysfunction to the formation of the subretinal drusenoid deposits, an alternative or concurrent mechanism for drusen genesis has been proposed; an impaired recruitment of macrophages through a CC chemokine ligand 2 (CCL2) and CC chemokine receptor 2-dependent (CCR2-dependent) pathway from the choroidal circulation may hamper the clearance of age-related accumulation of debris in Bruch's membrane [158].

Both CCL2- and CCR2-dependent macrophage recruitment plays a crucial role in the development of experimental CNV, and ocular-infiltrating macrophages present a direct angiogenic ability [159]. Based on the fact that microglial cells are not the predominant sources of CCL2 in the retina, other cells such as Müller glial cells promote the extravasation of monocytes through the retinal vasculature, and immune cell recruitment may contribute to dysregulation in retinal para-inflammation and AMD [159]. Nevertheless, microglial cells express the C-X-C-motif chemokine receptor 3 (CX3CR1; receptor for CX3C chemokine ligand 1 (CXCL1)), another chemokine receptor that regulates the responses of microglia during inflammation (Figure 2). It has been demonstrated that all retinal microglial cells express CX3CR1, and these cells accumulate subretinally in affected areas of the macula in AMD, suggesting the infiltration of the subretinal space by microglia cells [160]. However, in CX3CR1-deficient mice, accumulation of microglial cells is also observed in the subretinal space at sites of retinal degeneration and is associated with an exacerbation of CNV [161]. The recruitment of activated microglia to the milieu of drusen and atrophic lesions are thought to contribute to drusen formation, retinal degeneration and CNV [77,79,161–163]. Consistently, increased oxidative and nitrosative stress is associated with increased numbers of Iba1<sup>+</sup> macrophages/microglia in the retina and choroid in AMD eye sections. These data are in agreement with observations that macrophages and microglia recruitment in the macula are strongly associated with both early and advanced AMD [164].

In AMD the complement system activation is compromised at the level of retinal microglia/macrophages, thus contributing to the onset and progression of AMD. Deposition of complement, including C3, in affected areas of RPE/Bruch's membrane, is associated with the expansion of atrophic lesions. Interestingly, intravitreal injection of small interfering RNA (siRNA) can suppress the local production of C3 by macrophages, increasing retinal complement activation and degeneration [163]. Complement component 3 (C3d), which plays a key role in enhancing B cell-specific immune responses [165], has also been recently described in the subretinal space of aged CXCR5 knockout mice (CXCR5<sup>-/-</sup>) [166]. Aged CXCR5<sup>-/-</sup> mice present retinal degeneration, with photoreceptor cell death, upregulation of TNF and breakdown of the outer blood-retinal barrier. Moreover, these animals exhibit drusen-like deposits and the presence of A $\beta$  and Cryab, two abundant proteins that are present in Bruch's membrane and choroidal tissues of AMD patients [167,168]. A $\beta$  and Cryab induce activation of the alternative complement cascade and are a target for microglia adaptive immune responses [167,169].

Disturbance of the innate immune system in AMD is associated with dysregulated complement and inflammasome activation and reactive microglia [170]. Increased levels of complement fragments C3a and Ba, and cytokines (EGF, IL-1a2, IL-6, IL-8, ICAM1, MCP-1, among others) were found in aqueous humor samples of patients with exudative AMD [171,172]. Moreover, bioactive fragments of complement (C3a and C5a) present in drusen of AMD patients can induce VEGF expression, increasing susceptibility to CNV formation [173].

Studies carried out on mice lacking the hypoxia response element (HRE) in the VEGF promoter (Vegf <sup>$\delta/\delta$</sup>  mice) showed that CNV is almost totally prevented [174]. Although VEGF has a positive impact in wet AMD development, its receptors, VEGFR1 and VEGFR2, seem to play differential roles in regulating the recruitment and accumulation of retinal microglia/macrophage in the subretinal space. VEGFR1 plays an important role in the early stage of CNV, whereas both receptors play pivotal roles at the later stages, suggesting that the angiogenic response involves the two receptors. These data are associated with the regulation of two sub-populations: VEGFR1<sup>+</sup>2<sup>+</sup>CD45<sup>+</sup>CD11b<sup>+</sup>, which represent circulating cells responding to the early stage of an experimental model of laser-induced

CNV, and VEGFR1<sup>+</sup>Iba1<sup>-</sup>, which represent the microglia in the retina. However, it remains to be clarified whether the activation of the former is needed to recruit the latter to injured sites [174].

## 6. Modulation of Microglial Cells as a Potential Treatment for Neovascular AMD

In this review, we summarized the pieces of evidence supporting the contribution of microglial cells and microglial-driven inflammation to neovascularization. Since inflammation and neovascularization are closely related, several research teams tested if modulation of microglia activity might prevent retinal neovascularization.

Ablation of microglial cells via PLX5622 administration, an inhibitor of the colony-stimulating factor-1 receptor, results in a faster decrease of the CNV lesion size [175], suggesting a direct contribution of microglia to the maintenance of the CNV lesion. A few other studies suggested that inhibition of microglia-driven inflammation might be beneficial for the treatment of neovascular AMD, these included the knockdown of tumor necrosis factor receptor-associated factor 6 (TRAF6), the inhibition of sialic acid-binding immunoglobulin-like lectin-11 (SIGLEC11) receptor and  $\beta$ 2-adrenergic receptor. TRAF6 facilitates the inflammatory response in microglia and macrophages and promotes tumor angiogenesis via upregulating the expression of HIF-1 $\alpha$  and VEGF [176]. Intravitreal administration of TRAF6 siRNA inhibits the activation of microglia and macrophages, the formation of CNV and the expression of HIF-1 $\alpha$  and VEGF [177]. Sialic acid polymers prevent reactive oxygen species production by human mononuclear phagocytes via the SIGLEC11 receptor. Intravitreal injection of a low-dose of low molecular weight polysialic acid with an average degree of polymerization 20 (polySia avDP20) in humanized transgenic mice expressing SIGLEC11 on mononuclear phagocytes reduced their reactivity and vascular leakage induced by laser coagulation [178].  $\beta$ 2-adrenergic receptor signaling increases Vegf and IL-6 RNA expression in mouse retinal microglia. Intravitreal injection of an  $\beta$ 2-adrenergic receptor antagonist reduces CNV by 35% and decreases IL-6 protein levels by approximately 50%, these effects being partially due to the blocking of this pathway on microglial cells [179]. Moreover, systemic delivery of IFN- $\beta$  attenuates microgliosis and macrophage responses in the early stage of the disease and reduces CNV size in the late phase [180]. Intravitreal administration of IL-4 attenuates laser-induced CNV due to specific IL-4 conditioning of microglia/macrophages. IL-4 induces the expression of sFlt-1 by resident CD11b-positive retinal microglial cells and infiltrating myeloid cells [181].

While it is still difficult to be certain about the best strategy to modulate microglial cells and to prevent neovascularization, the treatment of neovascular AMD is currently performed by routine intraocular injections of anti-VEGF agents, and to some extent by photodynamic therapy and thermal laser [71]. The wide introduction of anti-VEGF therapy has led to an improvement in the prognosis of patients affected by neovascular AMD, resulting in more favorable outcomes for a previously blinding disease. Although all the previous benefits described, anti-VEGF therapy has its caveats, such as the probability of ocular infection, increased ocular pressure, cataract, vitreous hemorrhaging and retinal detachment [71]. Therefore, to overcome some of these limitations and side-effects, several drugs are being tested as adjuvants to anti-VEGF regimens, including a 2-mer pegylated DNA aptamer that selectively binds to PDGF-BB and PDGF-AB homodimers and heterodimers [182] (NCT01940900), and steroids such as triamcinolone acetonide [183] (NCT01249937) and dexamethasone [184] (NCT01243086). In contrast to anti-VEGF drugs that require regular eye administrations, gene therapy medicines provide sustained delivery of the therapeutic protein or peptide with a single-dose administration. It also has the advantage of being delivered to the target cell avoiding potential side effects. Several gene therapy trials for neovascular AMD where the transduced cell overexpresses an angiostatic protein to arrest CNV are ongoing. Amongst these are gene therapy delivering sFLT01, a fusion protein composed of VEGF/PlGF (placental growth factor) binding domain of human VEGFR1/Flt-1 (hVEGFR1) fused to the Fc portion of human IgG1 through a polyglycine linker [185] (NCT01024998), the lentiviral vector expressing endostatin and angiostatin [186] (NCT01301443), the adeno-associated viral vector expressing sCD59 [187]

(NCT03585556) and the adenovirus vector coding PEDF [188] (NCT00109499). Short interference RNAs (siRNA) have been also exploited as a treatment for neovascular AMD. Clinical trials using single intravitreal injections of a chemically modified siRNA targeting VEGFR-1 (Sirna-027, also known as AGN211745), were performed. However, the last clinical study terminated early due to company decision (non-safety related) (NCT00363714; NCT00395057) [189].

## 7. Conclusions

In this review, we summarized the substantial research effort to identify and study new molecular pathways responsible for the vascular alterations observed in AMD. Although our knowledge is limited, it is becoming clear that the resident immune cells of the retina, the microglial cells, do mediate processes related to neovascularization in AMD. Evidence suggests that the contribution of microglial cells might be either indirectly through the secretion of pro-inflammatory cytokines or directly via the release of angiogenic factors. A better understanding of the role of microglia in neovascularization will allow us to develop new therapeutic modalities based on the modulation of microglia physiology and reactivity. It is then crucial to clarify how, when and for how long we should modulate microglial activity, and only new studies in innovative disease models will allow us to answer these questions.

The development of groundbreaking innovations in diagnostic technologies, such as OCTA, that allows unprecedented high-resolution visualization of alterations in the choroidal and retinal vasculature, in combination with new therapeutic approaches, some of them based on the modulation of microglial cells, open new perspectives for early disease detection methods and treatment options thus allowing the prevention of macular degeneration and consequent vision loss.

**Author Contributions:** C.H.A., R.F. and A.R.S. conceptualized the review and wrote the manuscript. C.H.A. designed the figures. A.F.A. reviewed and edited the manuscript. All authors have read and agreed to the published version of the manuscript.

**Funding:** This research was funded by National Funds via FCT (Foundation for Science and Technology) through the Strategic Project UIDB/04539/2020 and UIDP/04539/2020 (CIBB); and CEECIND/00886/2017 to C.H.A.

**Conflicts of Interest:** The authors declare no conflict of interest.

## References

1. Quinn, P.M.J.; Wijnholds, J. Retinogenesis of the Human Fetal Retina: An Apical Polarity Perspective. *Genes* **2019**, *10*, 987. [[CrossRef](#)] [[PubMed](#)]
2. Ahmad, I.; Teotia, P.; Erickson, H.; Xia, X. Recapitulating developmental mechanisms for retinal regeneration. *Prog. Retin. Eye Res.* **2019**, 100824. [[CrossRef](#)] [[PubMed](#)]
3. Heavner, W.; Pevny, L. Eye development and retinogenesis. *Cold Spring Harb. Perspect. Biol.* **2012**, *4*, a008391. [[CrossRef](#)] [[PubMed](#)]
4. Alliot, F.; Godin, I.; Pessac, B. Microglia derive from progenitors, originating from the yolk sac, and which proliferate in the brain. *Brain Res. Dev. Brain Res.* **1999**, *117*, 145–152. [[CrossRef](#)]
5. Santos, A.M.; Calvente, R.; Tassi, M.; Carrasco, M.-C.; Martín-Oliva, D.; Marín-Teva, J.L.; Navascués, J.; Cuadros, M.A. Embryonic and postnatal development of microglial cells in the mouse retina. *J. Comp. Neurol.* **2008**, *506*, 224–239. [[CrossRef](#)]
6. Marín-Teva, J.L.; Almendros, A.; Calvente, R.; Cuadros, M.A.; Navascués, J. Tangential migration of amoeboid microglia in the developing quail retina: Mechanism of migration and migratory behavior. *Glia* **1998**, *22*, 31–52. [[CrossRef](#)]
7. Li, F.; Jiang, D.; Samuel, M.A. Microglia in the developing retina. *Neural Dev.* **2019**, *14*, 12. [[CrossRef](#)]
8. Madeira, M.H.; Boia, R.; Santos, P.F.; Ambrósio, A.F.; Santiago, A.R. Contribution of microglia-mediated neuroinflammation to retinal degenerative diseases. *Mediat. Inflamm.* **2015**, *2015*, 673090. [[CrossRef](#)]
9. Curcio, C.A.; Sloan, K.R.; Kalina, R.E.; Hendrickson, A.E. Human photoreceptor topography. *J. Comp. Neurol.* **1990**, *292*, 497–523. [[CrossRef](#)]
10. Potente, M.; Gerhardt, H.; Carmeliet, P. Basic and therapeutic aspects of angiogenesis. *Cell* **2011**, *146*, 873–887. [[CrossRef](#)]

11. Khanani, A.M.; Skelly, A.; Bezlyak, V.; Griner, R.; Torres, L.R.; Sagkriotis, A. SIERRA-AMD: A retrospective, real-world evidence study of patients with neovascular age-related macular degeneration in the USA. *Ophthalmol. Retin.* **2020**, *4*, 122–133. [[CrossRef](#)] [[PubMed](#)]
12. Gupta, P.; Ting, D.S.W.; Thakku, S.G.; Wong, T.-Y.; Cheng, C.-Y.; Wong, E.; Mathur, R.; Wong, D.; Yeo, I.; Gemmy Cheung, C.M. Detailed characterization of choroidal morphologic and vascular features in age-related macular degeneration and polypoidal choroidal vasculopathy. *Retina* **2017**, *37*, 2269–2280. [[CrossRef](#)] [[PubMed](#)]
13. Heng, L.Z.; Comyn, O.; Peto, T.; Tadros, C.; Ng, E.; Sivaprasad, S.; Hykin, P.G. Diabetic retinopathy: Pathogenesis, clinical grading, management and future developments. *Diabet. Med.* **2013**, *30*, 640–650. [[CrossRef](#)] [[PubMed](#)]
14. Nonobe, N.; Kaneko, H.; Ito, Y.; Takayama, K.; Kataoka, K.; Tsunekawa, T.; Matsuura, T.; Suzumura, A.; Shimizu, H.; Terasaki, H. Optical coherence tomography angiography of the foveal avascular zone in children with a history of treatment requiring retinopathy of prematurity. *Retina* **2019**, *39*, 111–117. [[CrossRef](#)]
15. Arrigo, A.; Romano, F.; Albertini, G.; Aragona, E.; Bandello, F.; Battaglia Parodi, M. Vascular patterns in retinitis pigmentosa on swept-source optical coherence tomography angiography. *J. Clin. Med.* **2019**, *8*, 1425. [[CrossRef](#)]
16. Schmidt-Erfurth, U.; Waldstein, S.M. A paradigm shift in imaging biomarkers in neovascular age-related macular degeneration. *Prog. Retin. Eye Res.* **2016**, *50*, 1–24. [[CrossRef](#)] [[PubMed](#)]
17. Perrott-Reynolds, R.; Cann, R.; Cronbach, N.; Neo, Y.N.; Ho, V.; McNally, O.; Madi, H.A.; Cochran, C.; Chakravarthy, U. The diagnostic accuracy of OCT angiography in naive and treated neovascular age-related macular degeneration: A review. *Eye* **2019**, *33*, 274–282. [[CrossRef](#)]
18. Chiquita, S.; Rodrigues-Neves, A.C.; Baptista, F.I.; Carecho, R.; Moreira, P.I.; Castelo-Branco, M.; Ambrósio, A.F. The retina as a window or mirror of the brain changes detected in Alzheimer’s disease: Critical aspects to unravel. *Mol. Neurobiol.* **2019**, *56*, 5416–5435. [[CrossRef](#)]
19. Zhao, L.; Zabel, M.K.; Wang, X.; Ma, W.; Shah, P.; Fariss, R.N.; Qian, H.; Parkhurst, C.N.; Gan, W.-B.; Wong, W.T. Microglial phagocytosis of living photoreceptors contributes to inherited retinal degeneration. *EMBO Mol. Med.* **2015**, *7*, 1179–1197. [[CrossRef](#)]
20. Ma, W.; Zhao, L.; Fontainhas, A.M.; Fariss, R.N.; Wong, W.T. Microglia in the mouse retina alter the structure and function of retinal pigmented epithelial cells: A potential cellular interaction relevant to AMD. *PLoS ONE* **2009**, *4*, e7945. [[CrossRef](#)]
21. Wang, X.; Zhao, L.; Zhang, J.; Fariss, R.N.; Ma, W.; Kretschmer, F.; Wang, M.; Qian, H.H.; Badea, T.C.; Diamond, J.S.; et al. Requirement for microglia for the maintenance of synaptic function and integrity in the mature retina. *J. Neurosci.* **2016**, *36*, 2827–2842. [[CrossRef](#)] [[PubMed](#)]
22. Ma, W.; Silverman, S.M.; Zhao, L.; Villasmil, R.; Campos, M.M.; Amaral, J.; Wong, W.T. Absence of TGF $\beta$  signaling in retinal microglia induces retinal degeneration and exacerbates choroidal neovascularization. *Elife* **2019**, *8*, e42049. [[CrossRef](#)] [[PubMed](#)]
23. Luttly, G.A.; McLeod, D.S. Development of the hyaloid, choroidal and retinal vasculatures in the fetal human eye. *Prog. Retin. Eye Res.* **2018**, *62*, 58–76. [[CrossRef](#)] [[PubMed](#)]
24. Luttly, G.A.; Hasegawa, T.; Baba, T.; Grebe, R.; Bhutto, I.; McLeod, D.S. Development of the human choriocapillaris. *Eye* **2010**, *24*, 408–415. [[CrossRef](#)]
25. Hayreh, S.S. The blood supply of the optic nerve head and the evaluation of it-myth and reality. *Prog. Retin. Eye Res.* **2001**, *20*, 563–593. [[CrossRef](#)]
26. Yeung, S.C.; You, Y.; Howe, K.L.; Yan, P. Choroidal thickness in patients with cardiovascular disease: A review. *Surv. Ophthalmol.* **2020**, *65*, 473–486. [[CrossRef](#)]
27. Nickla, D.L.; Wallman, J. The multifunctional choroid. *Prog. Retin. Eye Res.* **2010**, *29*, 144–168. [[CrossRef](#)]
28. Sugiyama, K.; Cioffi, G.A.; Bacon, D.R.; Van Buskirk, E.M. Optic nerve and peripapillary choroidal microvasculature in the primate. *J. Glaucoma* **1994**, *3*, 45–54. [[CrossRef](#)]
29. Chirco, K.R.; Sohn, E.H.; Stone, E.M.; Tucker, B.A.; Mullins, R.F. Structural and molecular changes in the aging choroid: Implications for age-related macular degeneration. *Eye* **2017**, *31*, 10–25. [[CrossRef](#)]
30. Sun, Y.; Smith, L.E.H. Retinal Vasculature in Development and Diseases. *Annu. Rev. Vis. Sci.* **2018**, *4*, 101–122. [[CrossRef](#)] [[PubMed](#)]
31. Daufenbach, D.R.; Ruttum, M.S.; Pulido, J.S.; Keech, R.V. Chorioretinal colobomas in a pediatric population. *Ophthalmology* **1998**, *105*, 1455–1458. [[CrossRef](#)]



32. McLeod, D.S.; Grebe, R.; Bhutto, I.; Merges, C.; Baba, T.; Lutty, G.A. Relationship between RPE and choriocapillaris in age-related macular degeneration. *Investig. Ophthalmol. Vis. Sci.* **2009**, *50*, 4982–4991. [[CrossRef](#)]
33. Alvarez, Y.; Cederlund, M.L.; Cottell, D.C.; Bill, B.R.; Ekker, S.C.; Torres-Vazquez, J.; Weinstein, B.M.; Hyde, D.R.; Vihtelic, T.S.; Kennedy, B.N. Genetic determinants of hyaloid and retinal vasculature in zebrafish. *BMC Dev. Biol.* **2007**, *7*, 114. [[CrossRef](#)] [[PubMed](#)]
34. Fruttiger, M. Development of the retinal vasculature. *Angiogenesis* **2007**, *10*, 77–88. [[CrossRef](#)] [[PubMed](#)]
35. Cheng, J.; Korte, N.; Nortley, R.; Sethi, H.; Tang, Y.; Attwell, D. Targeting pericytes for therapeutic approaches to neurological disorders. *Acta Neuropathol.* **2018**, *136*, 507–523. [[CrossRef](#)] [[PubMed](#)]
36. Dorrell, M.I.; Aguilar, E.; Friedlander, M. Retinal vascular development is mediated by endothelial filopodia, a preexisting astrocytic template and specific R-cadherin adhesion. *Investig. Ophthalmol. Vis. Sci.* **2002**, *43*, 3500–3510.
37. Pau, H. Hypothesis on the pathogenesis of retinopathy of prematurity-it is not VEGF alone but anatomical structures that are crucial. *Graefes Arch. Clin. Exp. Ophthalmol.* **2010**, *248*, 1–3. [[CrossRef](#)]
38. Selvam, S.; Kumar, T.; Fruttiger, M. Retinal vasculature development in health and disease. *Prog. Retin. Eye Res.* **2018**, *63*, 1–19. [[CrossRef](#)]
39. Provis, J.M. Development of the primate retinal vasculature. *Prog. Retin. Eye Res.* **2001**, *20*, 799–821. [[CrossRef](#)]
40. Gariano, R.F.; Gardner, T.W. Retinal angiogenesis in development and disease. *Nature* **2005**, *438*, 960–966. [[CrossRef](#)]
41. Chan-Ling, T.; McLeod, D.S.; Hughes, S.; Baxter, L.; Chu, Y.; Hasegawa, T.; Lutty, G.A. Astrocyte-endothelial cell relationships during human retinal vascular development. *Investig. Ophthalmol. Vis. Sci.* **2004**, *45*, 2020–2032. [[CrossRef](#)] [[PubMed](#)]
42. Flower, R.W.; McLeod, D.S.; Lutty, G.A.; Goldberg, B.; Wajer, S.D. Postnatal retinal vascular development of the puppy. *Invest. Ophthalmol. Vis. Sci.* **1985**, *26*, 957–968. [[PubMed](#)]
43. Hughes, S.; Yang, H.; Chan-Ling, T. Vascularization of the human fetal retina: Roles of vasculogenesis and angiogenesis. *Investig. Ophthalmol. Vis. Sci.* **2000**, *41*, 1217–1228.
44. Dorey, C.K.; Aouididi, S.; Reynaud, X.; Dvorak, H.F.; Brown, L.F. Correlation of vascular permeability factor/vascular endothelial growth factor with extraretinal neovascularization in the rat. *Arch. Ophthalmol.* **1996**, *114*, 1210–1217. [[CrossRef](#)] [[PubMed](#)]
45. Scott, A.; Powner, M.B.; Gandhi, P.; Clarkin, C.; Gutmann, D.H.; Johnson, R.S.; Ferrara, N.; Fruttiger, M. Astrocyte-derived vascular endothelial growth factor stabilizes vessels in the developing retinal vasculature. *PLoS ONE* **2010**, *5*, e11863. [[CrossRef](#)]
46. Dorrell, M.I.; Friedlander, M. Mechanisms of endothelial cell guidance and vascular patterning in the developing mouse retina. *Prog. Retin. Eye Res.* **2006**, *25*, 277–295. [[CrossRef](#)]
47. Chappell, J.C.; Darden, J.; Payne, L.B.; Fink, K.; Bautch, V.L. Blood vessel patterning on retinal astrocytes requires endothelial Flt-1 (VEGFR-1). *J. Dev. Biol.* **2019**, *7*, 18. [[CrossRef](#)]
48. Yamamoto, H.; Rundqvist, H.; Branco, C.; Johnson, R.S. Autocrine VEGF isoforms differentially regulate endothelial cell behavior. *Front. Cell Dev. Biol.* **2016**, *4*, 99. [[CrossRef](#)]
49. Stalmans, I.; Ng, Y.-S.; Rohan, R.; Fruttiger, M.; Bouché, A.; Yuce, A.; Fujisawa, H.; Hermans, B.; Shani, M.; Jansen, S.; et al. Arteriolar and venular patterning in retinas of mice selectively expressing VEGF isoforms. *J. Clin. Investig.* **2002**, *109*, 327–336. [[CrossRef](#)]
50. Ishida, S.; Usui, T.; Yamashiro, K.; Kaji, Y.; Amano, S.; Ogura, Y.; Hida, T.; Oguchi, Y.; Ambati, J.; Miller, J.W.; et al. VEGF164-mediated inflammation is required for pathological, but not physiological, ischemia-induced retinal neovascularization. *J. Exp. Med.* **2003**, *198*, 483–489. [[CrossRef](#)]
51. Ozaki, H.; Seo, M.-S.; Ozaki, K.; Yamada, H.; Yamada, E.; Okamoto, N.; Hofmann, F.; Wood, J.M.; Campochiaro, P.A. Blockade of vascular endothelial cell growth factor receptor signaling is sufficient to completely prevent retinal neovascularization. *Am. J. Pathol.* **2000**, *156*, 697–707. [[CrossRef](#)]
52. Sandercoe, T.M.; Geller, S.F.; Hendrickson, A.E.; Stone, J.; Provis, J.M. VEGF expression by ganglion cells in central retina before formation of the foveal depression in monkey retina: Evidence of developmental hypoxia. *J. Comp. Neurol.* **2003**, *462*, 42–54. [[CrossRef](#)]
53. Provis, J.M.; Hendrickson, A.E. The foveal avascular region of developing human retina. *Arch. Ophthalmol.* **2008**, *126*, 507–511. [[CrossRef](#)]

54. Kozulin, P.; Natoli, R.; O'Brien, K.M.B.; Madigan, M.C.; Provis, J.M. The cellular expression of antiangiogenic factors in fetal primate macula. *Investig. Ophthalmol. Vis. Sci.* **2010**, *51*, 4298–4306. [[CrossRef](#)] [[PubMed](#)]
55. Kozulin, P.; Natoli, R.; O'Brien, K.M.B.; Madigan, M.C.; Provis, J.M. Differential expression of anti-angiogenic factors and guidance genes in the developing macula. *Mol. Vis.* **2009**, *15*, 45–59. [[PubMed](#)]
56. Penfold, P.L.; Provis, J.M.; Madigan, M.C.; van Driel, D.; Billson, F.A. Angiogenesis in normal human retinal development the involvement of astrocytes and macrophages. *Graefe's Arch. Clin. Exp. Ophthalmol.* **1990**, *228*, 255–263. [[CrossRef](#)] [[PubMed](#)]
57. Usui, Y.; Westenskow, P.D.; Kurihara, T.; Aguilar, E.; Sakimoto, S.; Paris, L.P.; Wittgrove, C.; Feitelberg, D.; Friedlander, M.S.H.; Moreno, S.K.; et al. Neurovascular crosstalk between interneurons and capillaries is required for vision. *J. Clin. Invest.* **2015**, *125*, 2335–2346. [[CrossRef](#)]
58. Hanisch, U.-K.; Kettenmann, H. Microglia: Active sensor and versatile effector cells in the normal and pathologic brain. *Nat. Neurosci.* **2007**, *10*, 1387–1394. [[CrossRef](#)]
59. Tay, T.L.; Mai, D.; Dautzenberg, J.; Fernández-Klett, F.; Lin, G.; Sagar, S.; Datta, M.; Drougard, A.; Stempfl, T.; Ardura-Fabregat, A.; et al. A new fate mapping system reveals context-dependent random or clonal expansion of microglia. *Nat. Neurosci.* **2017**, *20*, 793–803. [[CrossRef](#)]
60. Checchin, D.; Sennlaub, F.; Levavasseur, E.; Leduc, M.; Chemtob, S. Potential Role of Microglia in Retinal Blood Vessel Formation. *Investig. Ophthalmology Vis. Sci.* **2006**, *47*, 3595–3602. [[CrossRef](#)]
61. Ashwell, K.W.S.; Holländer, H.; Streit, W.; Stone, J. The appearance and distribution of microglia in the developing retina of the rat. *Vis. Neurosci.* **1989**, *2*, 437–448. [[CrossRef](#)] [[PubMed](#)]
62. Rymo, S.F.; Gerhardt, H.; Sand, F.W.; Lang, R.; Uv, A.; Betsholtz, C. A two-way communication between microglial cells and angiogenic sprouts regulates angiogenesis in aortic ring cultures. *PLoS ONE* **2011**, *6*, e15846. [[CrossRef](#)] [[PubMed](#)]
63. Chen, S.; Tisch, N.; Kegel, M.; Yerbes, R.; Hermann, R.; Hudalla, H.; Zuliani, C.; Gülcüler, G.S.; Zwadlo, K.; von Engelhardt, J.; et al. CNS macrophages control neurovascular development via CD95L. *Cell Rep.* **2017**, *19*, 1378–1393. [[CrossRef](#)] [[PubMed](#)]
64. Yin, J.; Xu, W.Q.; Ye, M.X.; Zhang, Y.; Wang, H.Y.; Zhang, J.; Li, Y.; Wang, Y.S. Up-regulated basigin-2 in microglia induced by hypoxia promotes retinal angiogenesis. *J. Cell. Mol. Med.* **2017**, *21*, 3467–3480. [[CrossRef](#)] [[PubMed](#)]
65. Foulquier, S.; Caolo, V.; Swennen, G.; Milanova, I.; Reinhold, S.; Recarti, C.; Alenina, N.; Bader, M.; Steckelings, U.M.; Vanmierlo, T.; et al. The role of receptor MAS in microglia-driven retinal vascular development. *Angiogenesis* **2019**, *22*, 481–489. [[CrossRef](#)] [[PubMed](#)]
66. Outtz, H.H.; Tattersall, I.W.; Kofler, N.M.; Steinbach, N.; Kitajewski, J. Notch1 controls macrophage recruitment and Notch signaling is activated at sites of endothelial cell anastomosis during retinal angiogenesis in mice. *Blood* **2011**, *118*, 3436–3439. [[CrossRef](#)] [[PubMed](#)]
67. Haupt, F.; Krishnasamy, K.; Napp, L.C.; Augustynik, M.; Limbourg, A.; Gamrekelashvili, J.; Bauersachs, J.; Haller, H.; Limbourg, F.P. Retinal myeloid cells regulate tip cell selection and vascular branching morphogenesis via Notch ligand Delta-like 1. *Sci. Rep.* **2019**, *9*, 9798. [[CrossRef](#)]
68. Hong, H.K.; Lee, H.J.; Ko, J.H.; Park, J.H.; Park, J.Y.; Choi, C.W.; Yoon, C.H.; Ahn, S.J.; Park, K.H.; Woo, S.J.; et al. Neonatal systemic inflammation in rats alters retinal vessel development and simulates pathologic features of retinopathy of prematurity. *J. Neuroinflamm.* **2014**, *11*, 87. [[CrossRef](#)]
69. Sun, J.; Hopkins, B.D.; Tsujikawa, K.; Perruzzi, C.; Adini, I.; Swerlick, R.; Bornstein, P.; Lawler, J.; Benjamin, L.E. Thrombospondin-1 modulates VEGF-A-mediated Akt signaling and capillary survival in the developing retina. *Am. J. Physiol. Circ. Physiol.* **2009**, *296*, 1344–1351. [[CrossRef](#)]
70. Tremblay, S.; Miloudi, K.; Chaychi, S.; Favret, S.; Binet, F.; Polosa, A.; Lachapelle, P.; Chemtob, S.; Sapiéha, P. Systemic inflammation perturbs developmental retinal angiogenesis and neuroretinal function. *Invest. Ophthalmol. Vis. Sci.* **2013**, *54*, 8125–8139. [[CrossRef](#)]
71. Mammadzada, P.; Corredoira, P.M.; André, H. The role of hypoxia-inducible factors in neovascular age-related macular degeneration: A gene therapy perspective. *Cell. Mol. Life Sci.* **2020**, *77*, 819–833. [[CrossRef](#)] [[PubMed](#)]
72. Wong, W.L.; Su, X.; Li, X.; Cheung, C.M.G.; Klein, R.; Cheng, C.Y.; Wong, T.Y. Global prevalence of age-related macular degeneration and disease burden projection for 2020 and 2040: A systematic review and meta-analysis. *Lancet Glob. Health.* **2014**, *2*, 106–116. [[CrossRef](#)]

73. Gehrs, K.M.; Anderson, D.H.; Johnson, L.V.; Hageman, G.S. Age-related macular degeneration-emerging pathogenetic and therapeutic concepts. *Ann. Med.* **2006**, *38*, 450–471. [[CrossRef](#)] [[PubMed](#)]
74. Algreve, P.V.; Kvanta, A.; Seregard, S. Drusen maculopathy: A risk factor for visual deterioration. *Acta Ophthalmol.* **2016**, *94*, 427–433. [[CrossRef](#)]
75. Wang, J.J.; Mitchell, P.; Rochtchina, E.; Tan, A.G.; Wong, T.Y.; Klein, R. Retinal vessel wall signs and the 5 year incidence of age related maculopathy: The Blue Mountains Eye Study. *Br. J. Ophthalmol.* **2004**, *88*, 104–109. [[CrossRef](#)]
76. Remsch, H.; Spraul, C.W.; Lang, G.K.; Lang, G.E. Changes of retinal capillary blood flow in age-related maculopathy. *Graefe's Arch. Clin. Exp. Ophthalmol.* **2000**, *238*, 960–964. [[CrossRef](#)]
77. Anderson, D.H.; Mullins, R.F.; Hageman, G.S.; Johnson, L.V. A role for local inflammation in the formation of drusen in the aging eye. *Am. J. Ophthalmol.* **2002**, *134*, 411–431. [[CrossRef](#)]
78. Hageman, G.S.; Luthert, P.J.; Victor Chong, N.H.; Johnson, L.V.; Anderson, D.H.; Mullins, R.F. An integrated hypothesis that considers drusen as biomarkers of immune-mediated processes at the RPE-Bruch's membrane interface in aging and age-related macular degeneration. *Prog. Retin. Eye Res.* **2001**, *20*, 705–732. [[CrossRef](#)]
79. Johnson, L.V.; Leitner, W.P.; Staples, M.K.; Anderson, D.H. Complement activation and inflammatory processes in Drusen formation and age related macular degeneration. *Exp. Eye Res.* **2001**, *73*, 887–896. [[CrossRef](#)]
80. Anderson, D.H.; Radeke, M.J.; Gallo, N.B.; Chapin, E.A.; Johnson, P.T.; Curletti, C.R.; Hancox, L.S.; Hu, J.; Ebright, J.N.; Malek, G.; et al. The pivotal role of the complement system in aging and age-related macular degeneration: Hypothesis re-visited. *Prog. Retin. Eye Res.* **2010**, *29*, 95–112. [[CrossRef](#)]
81. Newman, A.M.; Gallo, N.B.; Hancox, L.S.; Miller, N.J.; Radeke, C.M.; Maloney, M.A.; Cooper, J.B.; Hageman, G.S.; Anderson, D.H.; Johnson, L.V.; et al. Systems-level analysis of age-related macular degeneration reveals global biomarkers and phenotype-specific functional networks. *Genome Med.* **2012**, *4*, 16. [[CrossRef](#)] [[PubMed](#)]
82. Mullins, R.F.; Aptsiauri, N.; Hageman, G.S. Structure and composition of drusen associated with glomerulonephritis: Implications for the role of complement activation in drusen biogenesis. *Eye* **2001**, *15*, 390–395. [[CrossRef](#)] [[PubMed](#)]
83. Bhutto, I.; Luttly, G. Understanding age-related macular degeneration (AMD): Relationships between the photoreceptor/retinal pigment epithelium/Bruch's membrane/choriocapillaris complex. *Mol. Aspects Med.* **2012**, *33*, 295–317. [[CrossRef](#)] [[PubMed](#)]
84. Sonoda, S.; Spee, C.; Barron, E.; Ryan, S.J.; Kannan, R.; Hinton, D.R. A protocol for the culture and differentiation of highly polarized human retinal pigment epithelial cells. *Nat. Protoc.* **2009**, *4*, 662–673. [[CrossRef](#)] [[PubMed](#)]
85. van der Schaft, T.L.; Mooy, C.M.; de Bruijn, W.C.; de Jong, P.T. Early stages of age-related macular degeneration: An immunofluorescence and electron microscopy study. *Br. J. Ophthalmol.* **1993**, *77*, 657–661. [[CrossRef](#)]
86. Mullins, R.F.; Russell, S.R.; Anderson, D.H.; Hageman, G.S. Drusen associated with aging and age-related macular degeneration contain proteins common to extracellular deposits associated with atherosclerosis, elastosis, amyloidosis, and dense deposit disease. *FASEB J.* **2000**, *14*, 835–846. [[CrossRef](#)]
87. Johnson, L.V.; Ozaki, S.; Staples, M.K.; Erickson, P.A.; Anderson, D.H. A potential role for immune complex pathogenesis in drusen formation. *Exp. Eye Res.* **2000**, *70*, 441–449. [[CrossRef](#)]
88. Crabb, J.W.; Miyagi, M.; Gu, X.; Shadrach, K.; West, K.A.; Sakaguchi, H.; Kamei, M.; Hasan, A.; Yan, L.; Rayborn, M.E.; et al. Drusen proteome analysis: An approach to the etiology of age-related macular degeneration. *Proc. Natl. Acad. Sci. USA* **2002**, *99*, 14682–14687. [[CrossRef](#)]
89. Wang, L.; Clark, M.E.; Crossman, D.K.; Kojima, K.; Messinger, J.D.; Mobley, J.A.; Curcio, C.A. Abundant lipid and protein components of drusen. *PLoS ONE* **2010**, *5*, e10329. [[CrossRef](#)]
90. Martin, D.F.; Maguire, M.G.; Ying, G.S.; Grunwald, J.E.; Fine, S.L.; Jaffe, G.J. Ranibizumab and bevacizumab for neovascular age-related macular degeneration. *N. Engl. J. Med.* **2011**, *364*, 1897–1908.
91. Klein, R.; Klein, B.E.K.; Knudtson, M.D.; Meuer, S.M.; Swift, M.; Gangnon, R.E. Fifteen-year cumulative incidence of age-related macular degeneration: The Beaver Dam Eye Study. *Ophthalmology* **2007**, *114*, 253–262. [[CrossRef](#)] [[PubMed](#)]
92. Jager, R.D.; Mieler, W.F.; Miller, J.W. Age-related macular degeneration. *N. Engl. J. Med.* **2008**, *358*, 2606–2617. [[CrossRef](#)] [[PubMed](#)]

93. Zweifel, S.A.; Spaide, R.F.; Curcio, C.A.; Malek, G.; Imamura, Y. Reticular pseudodrusen are subretinal drusenoid deposits. *Ophthalmology* **2010**, *117*, 303–312. [[CrossRef](#)] [[PubMed](#)]
94. Rudolf, M.; Malek, G.; Messinger, J.D.; Clark, M.E.; Wang, L.; Curcio, C.A. Sub-retinal drusenoid deposits in human retina: Organization and composition. *Exp. Eye Res.* **2008**, *87*, 402–408. [[CrossRef](#)]
95. Cohen, S.Y.; Dubois, L.; Tadayoni, R.; Delahaye-Mazza, C.; Debibie, C.; Quentel, G. Prevalence of reticular pseudodrusen in age-related macular degeneration with newly diagnosed choroidal neovascularisation. *Br. J. Ophthalmol.* **2007**, *91*, 354–359. [[CrossRef](#)]
96. Hamel, C.P.; Meunier, I.; Arndt, C.; Ben Salah, S.; Lopez, S.; Bazalgette, C.; Bazalgette, C.; Zanlonghi, X.; Arnaud, B.; Defoort-Dellhemmes, S.; et al. Extensive macular atrophy with pseudodrusen-like appearance: A new clinical entity. *Am. J. Ophthalmol.* **2009**, *147*, 609–620. [[CrossRef](#)]
97. Spaide, R.F.; Klancnik, J.M.; Cooney, M.J. Retinal vascular layers imaged by fluorescein angiography and optical coherence tomography angiography. *JAMA Ophthalmol.* **2015**, *133*, 45–50. [[CrossRef](#)]
98. Toto, L.; Borrelli, E.; Di Antonio, L.; Carpineto, P.; Mastropasqua, R. Retinal vascular plexuses' changes in dry age-related macular degeneration, evaluated by means of optical coherence tomography angiography. *Retina* **2016**, *36*, 1566–1572. [[CrossRef](#)]
99. Trinh, M.; Kalloniatis, M.; Nivison-Smith, L. Vascular changes in intermediate age-related macular degeneration quantified using optical coherence tomography angiography. *Transl. Vis. Sci. Technol.* **2019**, *8*, 20. [[CrossRef](#)]
100. Lee, E.K.; Yu, H.G. Ganglion cell-inner plexiform layer and peripapillary retinal nerve fiber layer thicknesses in age-related macular degeneration. *Invest. Ophthalmol. Vis. Sci.* **2015**, *56*, 3976–3983. [[CrossRef](#)]
101. Borrelli, E.; Abdelfattah, N.S.; Uji, A.; Nittala, M.G.; Boyer, D.S.; Sadda, S.R. Postreceptor neuronal loss in intermediate age-related macular degeneration. *Am. J. Ophthalmol.* **2017**, *181*, 1–11. [[CrossRef](#)] [[PubMed](#)]
102. Camacho, P.; Dutra-Medeiros, M.; Páris, L. Ganglion cell complex in early and intermediate age-related macular degeneration: Evidence by SD-OCT manual segmentation. *Ophthalmologica* **2017**, *238*, 31–43. [[CrossRef](#)] [[PubMed](#)]
103. Muftuoglu, I.K.; Ramkumar, H.L.; Bartsch, D.-U.; Meshi, A.; Gaber, R.; Freeman, W.R. Quantitative analysis of the inner retinal layer thicknesses in age-related macular degeneration using corrected optical coherence tomography segmentation. *Retina* **2018**, *38*, 1478–1484. [[CrossRef](#)] [[PubMed](#)]
104. Savastano, M.C.; Minnella, A.M.; Tamburrino, A.; Giovinco, G.; Ventre, S.; Falsini, B. Differential vulnerability of retinal layers to early age-related macular degeneration: Evidence by SD-OCT segmentation analysis. *Investig. Ophthalmol. Vis. Sci.* **2014**, *55*, 560–566. [[CrossRef](#)] [[PubMed](#)]
105. Yenice, E.; Şengün, A.; Soyugelen Demirok, G.; Turaçlı, E. Ganglion cell complex thickness in nonexudative age-related macular degeneration. *Eye* **2015**, *29*, 1076–1080. [[CrossRef](#)] [[PubMed](#)]
106. Zucchiatti, I.; Parodi, M.B.; Pierro, L.; Cicinelli, M.V.; Gagliardi, M.; Castellino, N.; Bandello, F. Macular ganglion cell complex and retinal nerve fiber layer comparison in different stages of age-related macular degeneration. *Am. J. Ophthalmol.* **2015**, *160*, 602–607. [[CrossRef](#)]
107. Lamin, A.; Oakley, J.D.; Dubis, A.M.; Russakoff, D.B.; Sivaprasad, S. Changes in volume of various retinal layers over time in early and intermediate age-related macular degeneration. *Eye* **2019**, *33*, 428–434. [[CrossRef](#)]
108. Pauleikhoff, D.; Spital, G.; Radermacher, M.; Brumm, G.A.; Lommatzsch, A.; Bird, A.C. A fluorescein and indocyanine green angiographic study of choriocapillaris in age-related macular disease. *Arch. Ophthalmol.* **1999**, *117*, 1353–1358. [[CrossRef](#)]
109. Capon, M.R.C.; Polkinghorne, P.J.; Fitzke, F.W.; Bird, A.C. Sorsby's pseudoinflammatory macula dystrophy—Sorsby's fundus dystrophies. *Eye* **1988**, *2*, 114–122. [[CrossRef](#)]
110. Polkinghorne, P.J.; Capon, M.R.C.; Berninger, T.; Lyness, A.L.; Sehmi, K.; Bird, A.C. Sorsby's Fundus Dystrophy: A Clinical Study. *Ophthalmology* **1989**, *96*, 1763–1768. [[CrossRef](#)]
111. Margolis, R.; Spaide, R.F. A pilot study of enhanced depth imaging optical coherence tomography of the choroid in normal eyes. *Am. J. Ophthalmol.* **2009**, *147*, 811–815. [[CrossRef](#)] [[PubMed](#)]
112. Grunwald, J.E.; Hariprasad, S.M.; DuPont, J.; Maguire, M.G.; Fine, S.L.; Brucker, A.J.; Maguire, A.M.; Ho, A.C. Foveolar choroidal blood flow in age-related macular degeneration. *Invest. Ophthalmol. Vis. Sci.* **1998**, *39*, 385–390. [[PubMed](#)]
113. Lee, J.Y.; Lee, D.H.; Lee, J.Y.; Yoon, Y.H. Correlation between subfoveal choroidal thickness and the severity or progression of nonexudative age-related macular degeneration. *Investig. Ophthalmol. Vis. Sci.* **2013**, *54*, 7812–7818. [[CrossRef](#)] [[PubMed](#)]



114. Mullins, R.F.; Johnson, M.N.; Faidley, E.A.; Skeie, J.M.; Huang, J. Choriocapillaris vascular dropout related to density of drusen in human eyes with early age-related macular degeneration. *Investig. Ophthalmol. Vis. Sci.* **2011**, *52*, 1606–1612. [[CrossRef](#)] [[PubMed](#)]
115. Garg, A.; Oll, M.; Yzer, S.; Chang, S.; Barile, G.R.; Merriam, J.C.; Tsang, S.H.; Bearely, S. Reticular pseudodrusen in early age-related macular degeneration are associated with choroidal thinning. *Investig. Ophthalmol. Vis. Sci.* **2013**, *54*, 7075–7081. [[CrossRef](#)] [[PubMed](#)]
116. Luty, G.A.; McLeod, D.S.; Bhutto, I.A.; Edwards, M.M.; Seddon, J.M. Choriocapillaris dropout in early age-related macular degeneration. *Exp. Eye Res.* **2020**, *192*, 107939. [[CrossRef](#)]
117. Usman, M.; Iqbal, K.; Ali, M.H.; Nafees, K. Features and diagnostic accuracy of optical coherence tomography angiography in neovascular age-related macular degeneration. *Cureus* **2019**, *11*, e6485. [[CrossRef](#)]
118. Provis, J.M.; Penfold, P.L.; Edwards, A.J.; van Driel, D. Human retinal microglia: Expression of immune markers and relationship to the glia limitans. *Glia* **1995**, *14*, 243–256. [[CrossRef](#)]
119. Karlstetter, M.; Scholz, R.; Rutar, M.; Wong, W.T.; Provis, J.M.; Langmann, T. Retinal microglia: Just bystander or target for therapy? *Prog. Retin. Eye Res.* **2015**, *45*, 30–57. [[CrossRef](#)]
120. Penfold, P.L.; Provis, J.M.; Liew, S.C. Human retinal microglia express phenotypic characteristics in common with dendritic antigen-presenting cells. *J. Neuroimmunol.* **1993**, *45*, 183–191. [[CrossRef](#)]
121. Karlstetter, M.; Ebert, S.; Langmann, T. Microglia in the healthy and degenerating retina: Insights from novel mouse models. *Immunobiology* **2010**, *215*, 685–691. [[CrossRef](#)] [[PubMed](#)]
122. Yeo, N.J.Y.; Chan, E.J.J.; Cheung, C. Choroidal neovascularization: Mechanisms of endothelial dysfunction. *Front. Pharmacol.* **2019**, *10*, 1363. [[CrossRef](#)] [[PubMed](#)]
123. Vielma, A.H.; Retamal, M.A.; Schmachtenberg, O. Nitric oxide signaling in the retina: What have we learned in two decades? *Brain Res.* **2012**, *1430*, 112–125. [[CrossRef](#)] [[PubMed](#)]
124. Cantó, A.; Olivar, T.; Romero, F.J.; Miranda, M. Nitrosative stress in retinal pathologies: Review. *Antioxidants* **2019**, *8*, 543.
125. Schmetterer, L. Role of Nitric Oxide in the Control of Ocular Blood Flow. *Prog. Retin. Eye Res.* **2001**, *20*, 823–847. [[CrossRef](#)]
126. Krilis, M.; Qi, M.; Madigan, M.C.; Wong, J.W.H.; Abdelatti, M.; Guymer, R.H.; Whitelock, J.; McCluskey, P.; Zhang, P.; Qi, J.; et al. Nitration of tyrosines in complement factor H domains alters its immunological activity and mediates a pathogenic role in age related macular degeneration. *Oncotarget* **2017**, *8*, 49016–49032. [[CrossRef](#)]
127. Masuda, T.; Shimazawa, M.; Hara, H. Retinal diseases associated with oxidative stress and the effects of a free radical scavenger (Edaravone). *Oxid. Med. Cell. Longev.* **2017**, *2017*, 9208489. [[CrossRef](#)]
128. Opatrilova, R.; Kubatka, P.; Caprnda, M.; Büsselberg, D.; Krasnik, V.; Vesely, P.; Saxena, S.; Ruia, S.; Mozos, I.; Rodrigo, L.; et al. Nitric oxide in the pathophysiology of retinopathy: Evidences from preclinical and clinical researches. *Acta Ophthalmol.* **2018**, *96*, 222–231. [[CrossRef](#)]
129. Bhutto, I.A.; Baba, T.; Merges, C.; McLeod, D.S.; Luty, G.A. Low nitric oxide synthases (NOSs) in eyes with age-related macular degeneration (AMD). *Exp. Eye Res.* **2010**, *90*, 155–167. [[CrossRef](#)]
130. Zhu, X.; Wang, K.; Zhang, K.; Zhou, F.; Zhu, L. Induction of oxidative and nitrosative stresses in human retinal pigment epithelial cells by all-trans-retinal. *Exp. Cell Res.* **2016**, *348*, 87–94. [[CrossRef](#)]
131. Nag, T.C.; Kathpalia, P.; Gorla, S.; Wadhwa, S. Localization of nitro-tyrosine immunoreactivity in human retina. *Ann. Anat.* **2019**, *223*, 8–18. [[CrossRef](#)] [[PubMed](#)]
132. Mazzitello, K.I.; Arizmendi, C.M.; Family, F.; Grossniklaus, H.E. Formation and growth of lipofuscin in the retinal pigment epithelium cells. *Phys. Rev. E. Stat. Nonlin. Soft Matter Phys.* **2009**, *80*, 051908. [[CrossRef](#)] [[PubMed](#)]
133. Boulton, M.; Marshall, J. Effects of increasing numbers of phagocytic inclusions on human retinal pigment epithelial cells in culture: A model for aging. *Br. J. Ophthalmol.* **1986**, *70*, 808–815. [[CrossRef](#)] [[PubMed](#)]
134. Feeney-Burns, L. Lipofuscin of human retinal pigment epithelium. *Am. J. Ophthalmol.* **1980**, *90*, 783–787. [[CrossRef](#)]
135. Wing, G.L.; Blanchard, G.C.; Weiter, J.J. The topography and age relationship of lipofuscin concentration in the retinal pigment epithelium. *Investig. Ophthalmol. Vis. Sci.* **1978**, *17*, 601–607.
136. Lakkaraju, A.; Finnemann, S.C.; Rodriguez-Boulan, E. The lipofuscin fluorophore A2E perturbs cholesterol metabolism in retinal pigment epithelial cells. *Proc. Natl. Acad. Sci. USA* **2007**, *104*, 11026–11031. [[CrossRef](#)]



137. Rattner, A.; Nathans, J. Macular degeneration: Recent advances and therapeutic opportunities. *Nat. Rev. Neurosci.* **2006**, *7*, 860–872. [[CrossRef](#)]
138. Thornalley, P.J. Cell activation by glycated proteins. AGE receptors, receptor recognition factors and functional classification of AGEs. *Cell. Mol. Biol.* **1998**, *44*, 1013–1023.
139. Lin, T.; Walker, G.B.; Kurji, K.; Fang, E.; Law, G.; Prasad, S.S.; Kojic, L.; Cao, S.; White, V.; Cui, J.Z.; et al. Parainflammation associated with advanced glycation endproduct stimulation of RPE in vitro: Implications for age-related degenerative diseases of the eye. *Cytokine* **2013**, *62*, 369–381. [[CrossRef](#)]
140. Ma, W.; Song, E.L.; Guo, J.; Qu, W.; Hudson, B.I.; Schmidt, A.M.; Barile, G.R. RAGE ligand upregulation of VEGF secretion in ARPE-19 cells. *Investig. Ophthalmol. Vis. Sci.* **2007**, *48*, 1355–1361. [[CrossRef](#)]
141. Yamada, Y.; Ishibashi, K.; Ishibashi, K.; Bhutto, I.A.; Tian, J.; Luty, G.A.; Handa, J.T. The expression of advanced glycation endproduct receptors in rpe cells associated with basal deposits in human maculas. *Exp. Eye Res.* **2006**, *82*, 840–848. [[CrossRef](#)]
142. Howes, K.A.; Liu, Y.; Dunaief, J.L.; Milam, A.; Frederick, J.M.; Marks, A.; Baehr, W. Receptor for advanced glycation end products and age-related macular degeneration. *Investig. Ophthalmol. Vis. Sci.* **2004**, *45*, 3713–3720. [[CrossRef](#)] [[PubMed](#)]
143. Bierhaus, A.; Schiekhofer, S.; Schwaninger, M.; Andrassy, M.; Humpert, P.M.; Chen, J.; Hong, M.; Luther, T.; Henle, T.; Klötting, I.; et al. Diabetes-associated sustained activation of the transcription factor nuclear factor-kappaB. *Diabetes* **2001**, *50*, 2792–2808. [[CrossRef](#)]
144. Gasparotto, J.; Girardi, C.S.; Somensi, N.; Ribeiro, C.T.; Moreira, J.C.F.; Michels, M.; Sonai, B.; Rocha, M.; Steckert, A.V.; Barichello, T.; et al. Receptor for advanced glycation end products mediates sepsis-triggered amyloid- $\beta$  accumulation, Tau phosphorylation, and cognitive impairment. *J. Biol. Chem.* **2018**, *293*, 226–244. [[CrossRef](#)] [[PubMed](#)]
145. Coughlan, M.T.; Thorburn, D.R.; Penfold, S.A.; Laskowski, A.; Harcourt, B.E.; Sourris, K.C.; Tan, A.L.Y.; Fukami, K.; Thallas-Bonke, V.; Nawroth, P.P.; et al. RAGE-induced cytosolic ROS promote mitochondrial superoxide generation in diabetes. *J. Am. Soc. Nephrol.* **2009**, *20*, 742–752. [[CrossRef](#)] [[PubMed](#)]
146. Kalea, A.Z.; Schmidt, A.M.; Hudson, B.I. RAGE: A novel biological and genetic marker for vascular disease. *Clin. Sci.* **2009**, *116*, 621–637. [[CrossRef](#)] [[PubMed](#)]
147. Xie, J.; Méndez, J.D.; Méndez-Valenzuela, V.; Aguilar-Hernández, M.M. Cellular signalling of the receptor for advanced glycation end products (RAGE). *Cell. Signal.* **2013**, *25*, 2185–2197. [[CrossRef](#)]
148. Chen, M.; Glenn, J.V.; Dasari, S.; McVicar, C.; Ward, M.; Colhoun, L.; Quinn, M.; Bierhaus, A.; Xu, H.; Stitt, A.W. RAGE regulates immune cell infiltration and angiogenesis in choroidal neovascularization. *PLoS ONE* **2014**, *9*, e89548. [[CrossRef](#)]
149. Nagineni, C.N.; Samuel, W.; Nagineni, S.; Pardhasaradhi, K.; Wiggert, B.; Detrick, B.; Hooks, J.J. Transforming growth factor- $\beta$  induces expression of vascular endothelial growth factor in human retinal pigment epithelial cells: Involvement of mitogen-activated protein kinases. *J. Cell. Physiol.* **2003**, *197*, 453–462. [[CrossRef](#)]
150. Balser, C.; Wolf, A.; Herb, M.; Langmann, T. Co-inhibition of PGF and VEGF blocks their expression in mononuclear phagocytes and limits neovascularization and leakage in the murine retina. *J. Neuroinflamm.* **2019**, *16*, 26. [[CrossRef](#)]
151. Olson, J.L.; Courtney, R.J.; Rouhani, B.; Mandava, N.; Dinarello, C.A. Intravitreal anakinra inhibits choroidal neovascular membrane growth in a rat model. *Ocul. Immunol. Inflamm.* **2009**, *17*, 195–200. [[CrossRef](#)] [[PubMed](#)]
152. Marneros, A.G. NLRP3 inflammasome blockade inhibits VEGF-A-induced age-related macular degeneration. *Cell Rep.* **2013**, *4*, 945–958. [[CrossRef](#)] [[PubMed](#)]
153. Izumi-Nagai, K.; Nagai, N.; Ozawa, Y.; Mihara, M.; Ohsugi, Y.; Kurihara, T.; Koto, T.; Satofuka, S.; Inoue, M.; Tsubota, K.; et al. Interleukin-6 receptor-mediated activation of signal transducer and activator of transcription-3 (STAT3) promotes choroidal neovascularization. *Am. J. Pathol.* **2007**, *170*, 2149–2158. [[CrossRef](#)] [[PubMed](#)]
154. Simó, R.; Carrasco, E.; García-Ramírez, M.; Hernández, C. Angiogenic and antiangiogenic factors in proliferative diabetic retinopathy. *Curr. Diabetes Rev.* **2006**, *2*, 71–98. [[CrossRef](#)]
155. Nunes, I.; Munger, J.; Harpel, J.G.; Nagano, Y.; Shapiro, R.; Gleizes, P.E.; Rifkin, D.B. Structure and activation of the large latent transforming growth factor-Beta complex. *J. Am. Optom. Assoc.* **1998**, *69*, 643–648.

156. Loukovaara, S.; Robciuc, A.; Holopainen, J.M.; Lehti, K.; Pessi, T.; Liinamaa, J.; Kukkonen, K.T.; Jauhiainen, M.; Koli, K.; Keski-Oja, J.; et al. Ang-2 upregulation correlates with increased levels of MMP-9, VEGF, EPO and TGF $\beta$ 1 in diabetic eyes undergoing vitrectomy. *Acta Ophthalmol.* **2013**, *91*, 531–539. [[CrossRef](#)]
157. Wang, X.; Ma, W.; Han, S.; Meng, Z.; Zhao, L.; Yin, Y.; Wang, Y.; Li, J. TGF- $\beta$  participates choroid neovascularization through Smad2/3-VEGF/TNF- $\alpha$  signaling in mice with Laser-induced wet age-related macular degeneration. *Sci. Rep.* **2017**, *7*, 9672. [[CrossRef](#)]
158. Ambati, J.; Anand, A.; Fernandez, S.; Sakurai, E.; Lynn, B.C.; Kuziel, W.A.; Rollins, B.J.; Ambati, B.K. An animal model of age-related macular degeneration in senescent Ccl-2- or Ccr-2-deficient mice. *Nat. Med.* **2003**, *9*, 1390–1397. [[CrossRef](#)]
159. Tsutsumi, C.; Sonoda, K.-H.; Egashira, K.; Qiao, H.; Hisatomi, T.; Nakao, S.; Ishibashi, M.; Charo, I.F.; Sakamoto, T.; Murata, T.; et al. The critical role of ocular-infiltrating macrophages in the development of choroidal neovascularization. *J. Leukoc. Biol.* **2003**, *74*, 25–32. [[CrossRef](#)]
160. Tuo, J.; Smith, B.C.; Bojanoeski, C.M.; Meleth, A.D.; Gery, I.; Csaky, K.G.; Chew, E.Y.; Chan, C.C. The involvement of sequence variation and expression of CX3CR1 in the pathogenesis of age-related macular degeneration. *FASEB J.* **2004**, *18*, 1297–1299. [[CrossRef](#)]
161. Combadière, C.; Feumi, C.; Raoul, W.; Keller, N.; Rodéro, M.; Pézard, A.; Lavalette, S.; Houssier, M.; Jonet, L.; Picard, E.; et al. CX3CR1-dependent subretinal microglia cell accumulation is associated with cardinal features of age-related macular degeneration. *J. Clin. Investig.* **2007**, *117*, 2920–2928. [[CrossRef](#)] [[PubMed](#)]
162. Umeda, S.; Suzuki, M.T.; Okamoto, H.; Ono, F.; Mizota, A.; Terao, K.; Yoshikawa, Y.; Tanaka, Y.; Iwata, T. Molecular composition of drusen and possible involvement of anti-retinal autoimmunity in two different forms of macular degeneration in cynomolgus monkey (*Macaca fascicularis*). *FASEB J.* **2005**, *19*, 1683–1685. [[CrossRef](#)] [[PubMed](#)]
163. Natoli, R.; Fernando, N.; Jiao, H.; Racic, T.; Madigan, M.; Barnett, N.L.; Chu-Tan, J.A.; Valter, K.; Provis, J.; Rutar, M. Retinal macrophages synthesize C3 and activate complement in AMD and in models of focal retinal degeneration. *Investig. Ophthalmol. Vis. Sci.* **2017**, *58*, 2977–2990. [[CrossRef](#)] [[PubMed](#)]
164. Cherepanoff, S.; McMenamin, P.; Gillies, M.C.; Kettle, E.; Sarks, S.H. Bruch's membrane and choroidal macrophages in early and advanced age-related macular degeneration. *Br. J. Ophthalmol.* **2010**, *94*, 918–925. [[CrossRef](#)]
165. Sahu, A.; Lambris, J.D. Structure and biology of complement protein C3, a connecting link between innate and acquired immunity. *Immunol. Rev.* **2001**, *180*, 35–48. [[CrossRef](#)]
166. Lennikov, A.; Saddala, M.S.; Mukwaya, A.; Tang, S.; Huang, H. Autoimmune-mediated retinopathy in CXCR5-deficient mice as the result of age-related macular degeneration associated proteins accumulation. *Front. Immunol.* **2019**, *10*, 1903. [[CrossRef](#)]
167. Lashkari, K.; Teague, G.; Chen, H.; Lin, Y.-Q.; Kumar, S.; McLaughlin, M.M.; López, F.J. A monoclonal antibody targeting amyloid  $\beta$  (A $\beta$ ) restores complement factor I bioactivity: Potential implications in age-related macular degeneration and Alzheimer's disease. *PLoS ONE* **2018**, *13*, e0195751. [[CrossRef](#)]
168. Iannaccone, A.; Giorgianni, F.; New, D.D.; Hollingsworth, T.J.; Umfress, A.; Alhatem, A.H.; Neeli, I.; Lenchik, N.I.; Jennings, B.J.; Calzada, J.I.; et al. Circulating autoantibodies in age-related macular degeneration recognize human macular tissue antigens implicated in autophagy, immunomodulation, and protection from oxidative stress and apoptosis. *PLoS ONE* **2015**, *10*, e0145323. [[CrossRef](#)]
169. Van Noort, J.M.; Bsibsi, M.; Gerritsen, W.H.; Van Der Valk, P.; Bajramovic, J.J.; Steinman, L.; Amor, S.  $\alpha$ B-crystallin is a target for adaptive immune responses and a trigger of innate responses in preactive multiple sclerosis lesions. *J. Neuropathol. Exp. Neurol.* **2010**, *69*, 694–703. [[CrossRef](#)]
170. Ambati, J.; Atkinson, J.P.; Gelfand, B.D. Immunology of age-related macular degeneration. *Nat. Rev. Immunol.* **2013**, *13*, 438–451. [[CrossRef](#)]
171. Fritsche, L.G.; Fariss, R.N.; Stambolian, D.; Abecasis, G.R.; Curcio, C.A.; Swaroop, A. Age-related macular degeneration: Genetics and biology coming together. *Annu. Rev. Genomics Hum. Genet.* **2014**, *15*, 151–171. [[CrossRef](#)] [[PubMed](#)]
172. Jonas, J.B.; Tao, Y.; Neumaier, M.; Findeisen, P. Cytokine concentration in aqueous humour of eyes with exudative age-related macular degeneration. *Acta Ophthalmol.* **2012**, *90*, 381–388. [[CrossRef](#)] [[PubMed](#)]
173. Nozaki, M.; Raisler, B.J.; Sakurai, E.; Sarma, J.V.; Barnum, S.R.; Lambris, J.D.; Chen, Y.; Zhang, K.; Ambati, B.K.; Baffi, J.Z.; et al. Drusen complement components C3a and C5a promote choroidal neovascularization. *Proc. Natl. Acad. Sci.* **2006**, *103*, 2328–2333. [[CrossRef](#)] [[PubMed](#)]

174. Viores, S.A.; Xiao, W.H.; Aslam, S.; Shen, J.; Oshima, Y.; Nambu, H.; Liu, H.; Carmeliet, P.; Campochiaro, P.A. Implication of the hypoxia response element of the Vegf promoter in mouse models of retinal and choroidal neovascularization, but not retinal vascular development. *J. Cell. Physiol.* **2006**, *206*, 749–758. [[CrossRef](#)] [[PubMed](#)]
175. Schwarzer, P.; Kokona, D.; Ebnetter, A.; Zinkernagel, M.S. Effect of inhibition of colony-stimulating factor 1 receptor on choroidal neovascularization in mice. *Am. J. Pathol.* **2020**, *190*, 412–425. [[CrossRef](#)]
176. Dainichi, T.; Matsumoto, R.; Mostafa, A.; Kabashima, K. Immune Control by TRAF6-Mediated Pathways of Epithelial Cells in the EIME (Epithelial Immune Microenvironment). *Front. Immunol.* **2019**, *10*, 1107. [[CrossRef](#)]
177. Ding, D.; Zhu, M.; Liu, X.; Jiang, L.; Xu, J.; Chen, L.; Liang, J.; Li, L.; Zhou, T.; Wang, Y.; et al. Inhibition of TRAF6 alleviates choroidal neovascularization in vivo. *Biochem. Biophys. Res. Commun.* **2018**, *503*, 2742–2748. [[CrossRef](#)]
178. Karlstetter, M.; Kopatz, J.; Aslanidis, A.; Shahraz, A.; Caramoy, A.; Linnartz-Gerlach, B.; Lin, Y.; Lückoff, A.; Fauser, S.; Düker, K.; et al. Polysialic acid blocks mononuclear phagocyte reactivity, inhibits complement activation, and protects from vascular damage in the retina. *EMBO Mol. Med.* **2017**, *9*, 154–166. [[CrossRef](#)]
179. Lavine, J.A.; Farnoodian, M.; Wang, S.; Darjatmoko, S.R.; Wright, L.S.; Gamm, D.M.; Ip, M.S.; Sorenson, C.M.; Sheibani, N.  $\beta_2$ -Adrenergic receptor antagonism attenuates CNV through inhibition of VEGF and IL-6 expression. *Investig. Ophthalmology Vis. Sci.* **2017**, *58*, 299–308. [[CrossRef](#)]
180. Lückoff, A.; Caramoy, A.; Scholz, R.; Prinz, M.; Kalinke, U.; Langmann, T. Interferon-beta signaling in retinal mononuclear phagocytes attenuates pathological neovascularization. *EMBO Mol. Med.* **2016**, *8*, 670–678. [[CrossRef](#)]
181. Wu, W.K.; Georgiadis, A.; Copland, D.A.; Liyanage, S.; Luhmann, U.F.O.; Robbie, S.J.; Liu, J.; Wu, J.; Bainbridge, J.W.; Bates, D.O.; et al. IL-4 Regulates Specific Arg-1+ Macrophage sFlt-1-Mediated Inhibition of Angiogenesis. *Am. J. Pathol.* **2015**, *185*, 2324–2335. [[CrossRef](#)] [[PubMed](#)]
182. Jaffe, G.J.; Ciulla, T.A.; Ciardella, A.P.; Devin, F.; Dugel, P.U.; Eandi, C.M.; Masonson, H.; Monés, J.; Pearlman, J.A.; Quaranta-El Maftouhi, M.; et al. Dual antagonism of PDGF and VEGF in neovascular age-related macular degeneration: A phase IIb, multicenter, randomized controlled trial. *Ophthalmology* **2017**, *124*, 224–234. [[CrossRef](#)] [[PubMed](#)]
183. Lim, J.I.; Niec, M.; Wong, V. One year results of a phase 1 study of the safety and tolerability of combination therapy using sustained release intravitreal triamcinolone acetonide and ranibizumab for subfoveal neovascular AMD. *Br. J. Ophthalmol.* **2015**, *99*, 618–623. [[CrossRef](#)]
184. Chaudhary, V.; Barbosa, J.; Lam, W.-C.; Mak, M.; Mavrikakis, E.; Mohaghegh P, S.M. Ozurdex in age-related macular degeneration as adjunct to ranibizumab (The OARA Study). *Can. J. Ophthalmol.* **2016**, *51*, 302–305. [[CrossRef](#)] [[PubMed](#)]
185. MacLachlan, T.K.; Lukason, M.; Collins, M.; Munger, R.; Isenberger, E.; Rogers, C.; Malatos, S.; Dufresne, E.; Morris, J.; Calcedo, R.; et al. Preclinical safety evaluation of AAV2-sFLT01 a gene therapy for age-related macular degeneration. *Mol. Ther.* **2011**, *19*, 326–334. [[CrossRef](#)]
186. Campochiaro, P.A.; Lauer, A.K.; Sohn, E.H.; Mir, T.A.; Naylor, S.; Anderton, M.C.; Kelleher, M.; Harrop, R.; Ellis, S.; Mitrophanous, K.A. Lentiviral vector gene transfer of Endostatin/Angiostatin for macular degeneration (GEM) study. *Hum. Gene Ther.* **2017**, *28*, 99–111. [[CrossRef](#)]
187. Cashman, S.M.; Ramo, K.; Kumar-Singh, R. A non membrane-targeted human soluble CD59 attenuates choroidal neovascularization in a model of age-related macular degeneration. *PLoS ONE* **2011**, *6*, e19078. [[CrossRef](#)]
188. Rasmussen, H.; Chu, K.W.; Campochiaro, P.; Gehlbach, P.L.; Haller, J.A.; Handa, J.T.; Nguyen, Q.D.; Sung, J.U. Clinical protocol. An open-label, phase I, single administration, dose-escalation study of ADGVPEDF.11D (ADPEDF) in neovascular age-related macular degeneration (AMD). *Hum. Gene Ther.* **2001**, *12*, 2029–2032.
189. Kaiser, P.K.; Symons, R.C.A.; Shah, S.M.; Quinlan, E.J.; Tabandeh, H.; Do, D.V.; Reisen, G.; Lockridge, J.A.; Short, B.; Guercolini, R.; et al. RNAi-based treatment for neovascular age-related macular degeneration by Sirna-027. *Am. J. Ophthalmol.* **2010**, *150*, 33–39. [[CrossRef](#)]

